

**Power Inductor SCD Series**

**Automotive  
AEC-Q200**

RoHS Compliant  
Halogen Free  
REACH Compliant



Power Circuit
Unshield
Wire Wound
Ferrite

**Part Numbering**

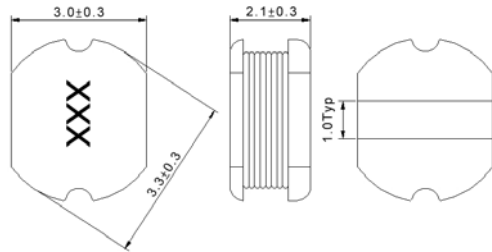
SCD	03021	T	-	1R0	M	-	AU
Series Name	Dimensions Code (mm)	Internal Code		Inductance (uH)	Tolerance		Internal Code
	03021 3.3x3.0x2.1			R47 0.47	K ±10%		
	0403 4.5x4.0x3.2			1R0 1.0	M ±20%		
	0503 5.8x5.2x3.0			101 100	T ±30%		
	0504 5.8x5.2x4.5						
	0703 7.8x7.0x3.5						
	0705 7.8x7.0x5.0						

**Power Inductor SCD Series**

**Automotive  
AEC-Q200**

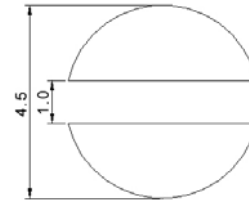
**SCD03021 - AU Type**

**■ Dimensions**



unit:mm

**■ Recommended Land Pattern**



unit:mm

**■ Electrical Characteristics**

Part No.	Inductance (uH)	Test Freq.	RDC (Ω)Max.	Isat (A)	Tolerance (±%)	Marking
SCD03021T-R82□-AU	0.82	7.96 MHz,1 V	0.06	2.2	30	AX
SCD03021T-1R0□-AU	1	7.96 MHz,1 V	0.07	2.08	20	BA
SCD03021T-1R4□-AU	1.4	7.96 MHz,1 V	0.09	1.86	20	BE
SCD03021T-1R5□-AU	1.5	7.96 MHz,1 V	0.11	1.8	20	BF
SCD03021T-1R8□-AU	1.8	7.96 MHz,1 V	0.11	1.8	20	BI
SCD03021T-2R2□-AU	2.2	7.96 MHz,1 V	0.13	1.39	20	CC
SCD03021T-2R7□-AU	2.7	7.96 MHz,1 V	0.14	1.32	20	CH
SCD03021T-3R3□-AU	3.3	7.96 MHz,1 V	0.17	1.25	20	DD
SCD03021T-3R9□-AU	3.9	7.96 MHz,1 V	0.19	1.2	20	DJ
SCD03021T-4R7□-AU	4.7	7.96 MHz,1 V	0.21	1.13	20	EH
SCD03021T-5R6□-AU	5.6	7.96 MHz,1 V	0.22	0.91	20	FG
SCD03021T-6R8□-AU	6.8	7.96 MHz,1 V	0.25	0.85	20	GI
SCD03021T-7R0□-AU	7	7.96 MHz,1 V	0.28	0.82	20	HA
SCD03021T-8R2□-AU	8.2	7.96 MHz,1 V	0.28	0.82	20	IC
SCD03021T-100□-AU	10	2.52 MHz,1 V	0.32	0.74	10,20	KA
SCD03021T-120□-AU	12	2.52 MHz,1 V	0.35	0.64	20	QA
SCD03021T-150□-AU	15	2.52 MHz,1 V	0.4	0.6	20	MA
SCD03021T-180□-AU	18	2.52 MHz,1 V	0.48	0.54	20	RA
SCD03021T-220□-AU	22	2.52 MHz,1 V	0.58	0.5	10,20	LA
SCD03021T-270□-AU	27	2.52 MHz,1 V	0.65	0.43	20	SA
SCD03021T-330□-AU	33	2.52 MHz,1 V	0.8	0.4	20	NA
SCD03021T-390□-AU	39	2.52 MHz,1 V	0.9	0.37	20	PA
SCD03021T-470□-AU	47	2.52 MHz,1 V	1.19	0.36	20	OA
SCD03021T-500□-AU	50	2.52 MHz,1 V	1.22	0.33	20	TA
SCD03021T-560□-AU	56	2.52 MHz,1 V	1.27	0.31	20	UA
SCD03021T-680□-AU	68	2.52 MHz,1 V	1.73	0.3	10,20	VA
SCD03021T-750□-AU	75	2.52 MHz,1 V	1.9	0.29	20	WA
SCD03021T-820□-AU	82	2.52 MHz,1 V	1.99	0.28	10,20	XA
SCD03021T-101□-AU	100	1 kHz,1 V	2.52	0.25	20	KB
SCD03021T-121□-AU	120	1 kHz,1 V	2.9	0.2	10,20	QB
SCD03021T-151□-AU	150	1 kHz,1 V	3.36	0.19	20	MB
SCD03021T-181□-AU	180	1 kHz,1 V	5.1	0.17	20	RB
SCD03021T-221□-AU	220	1 kHz,1 V	5.8	0.16	10,20	LB
SCD03021T-271□-AU	270	1 kHz,1 V	7.8	0.14	10,20	SB

**Note: When ordering, please specify tolerance code. Tolerance: K=±10% / M=±20% / T=±30%**

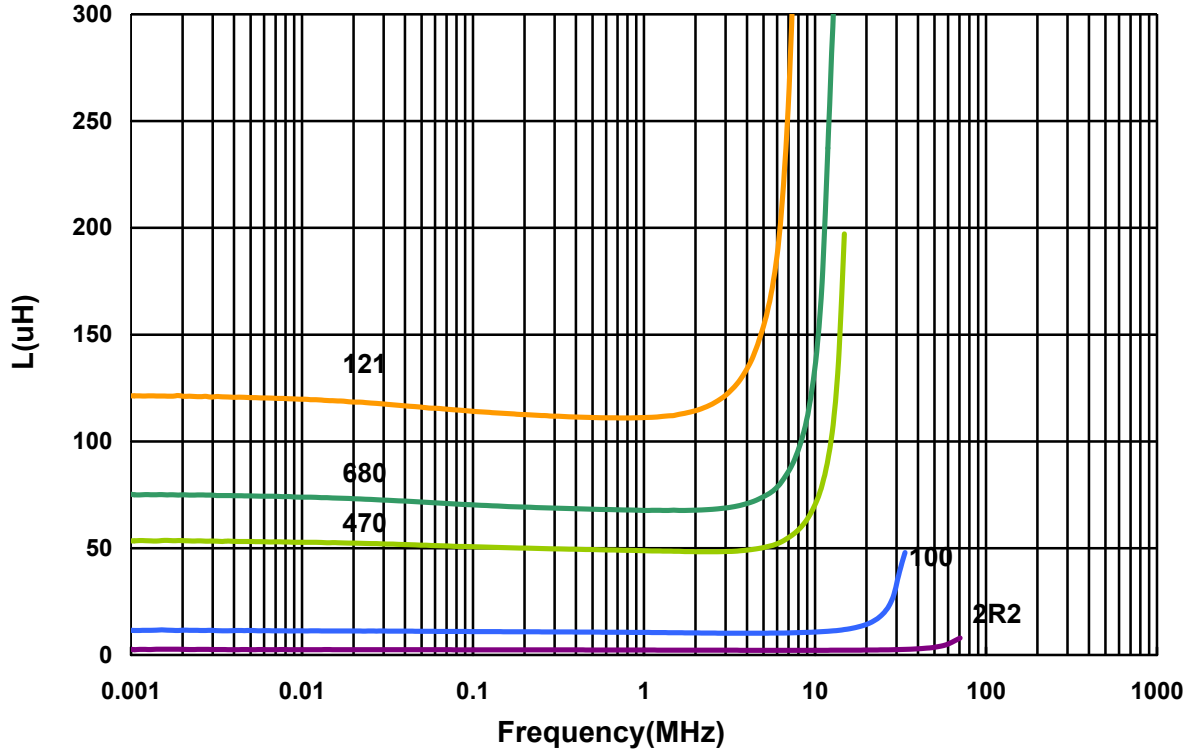
- Operating temperature range - 40°C ~ 125°C(Including self - temperature rise)
- Isat for Inductance drop 10% from its value without current
- Measure Equipment:  
L: Agilent E4980 or HP4284A (over 1MHz), HP4285A (under 1MHz)  
RDC: Chroma 16502  
Isat: HP4284+42841A or WK3260B+WK3265B

"Please be sure to request approval specifications that provide further details of the products. Kindly note that the content of these specifications are subject to change or may be discontinued without advance notice. Please contact our sales department before ordering."

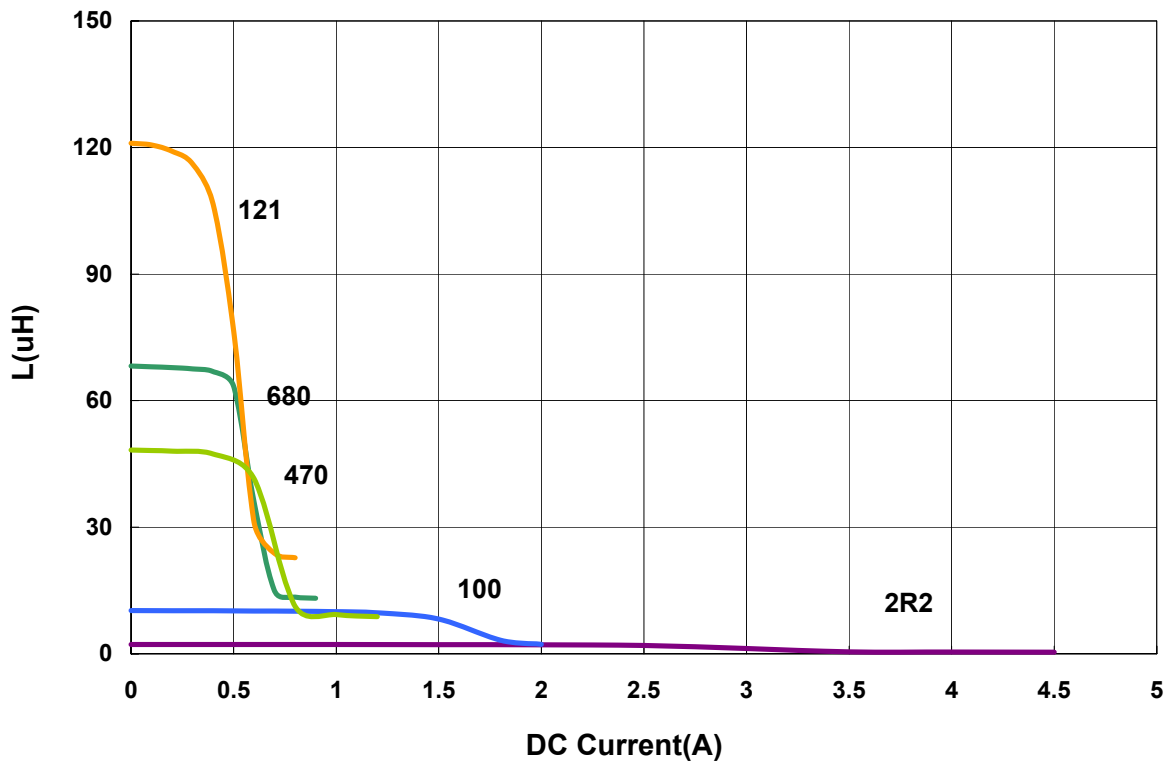
SCD03021 - AU Type

■ Characteristics Graph

Inductance vs. Frequency Charateristics



Inductance vs. DC Current



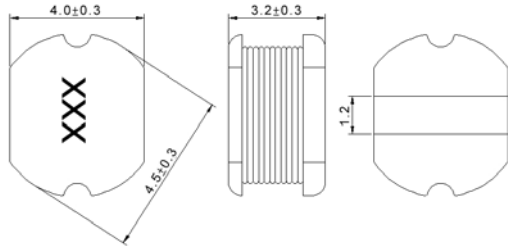
"Please be sure to request approval specifications that provide further details of the products. Kindly note that the content of these specifications are subject to change or may be discontinued without advance notice. Please contact our sales department before ordering."

**Power Inductor SCD Series**

**Automotive  
AEC-Q200**

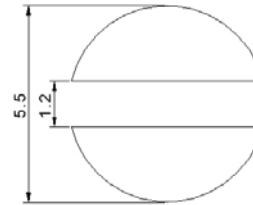
**SCD0403 - AU Type**

**■ Dimensions**



unit:mm

**■ Recommended Land Pattern**



unit:mm

**■ Electrical Characteristics**

Part No.	Inductance (uH)	Test Freq.	RDC (Ω)Max.	Isat (A)	Tolerance (±%)	Marking
SCD0403T-R15□-AU	0.15	7.96 MHz,1 V	0.0085	7.5	30	R15
SCD0403T-1R0□-AU	1	7.96 MHz,1 V	0.033	3.8	10,20	1R0
SCD0403T-1R2□-AU	1.2	7.96 MHz,1 V	0.035	3.5	20	1R2
SCD0403T-1R4□-AU	1.4	7.96 MHz,1 V	0.038	3.3	20	1R4
SCD0403T-1R8□-AU	1.8	7.96 MHz,1 V	0.042	2.91	10,20	1R8
SCD0403T-2R2□-AU	2.2	7.96 MHz,1 V	0.047	2.6	10,20	2R2
SCD0403T-2R7□-AU	2.7	7.96 MHz,1 V	0.052	2.43	20	2R7
SCD0403T-3R3□-AU	3.3	7.96 MHz,1 V	0.058	2.15	10,20	3R3
SCD0403T-3R9□-AU	3.9	7.96 MHz,1 V	0.076	1.98	20	3R9
SCD0403T-4R7□-AU	4.7	7.96 MHz,1 V	0.094	1.7	10,20	4R7
SCD0403T-5R6□-AU	5.6	7.96 MHz,1 V	0.101	1.6	10,20	5R6
SCD0403T-6R2□-AU	6.2	7.96 MHz,1 V	0.11	1.5	20	6R2
SCD0403T-6R8□-AU	6.8	7.96 MHz,1 V	0.117	1.41	10,20	6R8
SCD0403T-8R2□-AU	8.2	7.96 MHz,1 V	0.132	1.26	10,20	8R2
SCD0403T-100□-AU	10	2.52 MHz,1 V	0.182	1.15	10,20	100
SCD0403T-120□-AU	12	2.52 MHz,1 V	0.21	1.05	20	120
SCD0403T-150□-AU	15	2.52 MHz,1 V	0.235	0.92	10,20	150
SCD0403T-180□-AU	18	2.52 MHz,1 V	0.338	0.84	20	180
SCD0403T-220□-AU	22	2.52 MHz,1 V	0.378	0.76	10,20	220
SCD0403T-270□-AU	27	2.52 MHz,1 V	0.522	0.71	20	270
SCD0403T-330□-AU	33	2.52 MHz,1 V	0.54	0.64	10,20	330
SCD0403T-390□-AU	39	2.52 MHz,1 V	0.587	0.59	10,20	390
SCD0403T-470□-AU	47	2.52 MHz,1 V	0.844	0.54	10,20	470
SCD0403T-560□-AU	56	2.52 MHz,1 V	0.937	0.5	10,20	560
SCD0403T-680□-AU	68	2.52 MHz,1 V	1.117	0.46	10,20	680
SCD0403T-101□-AU	100	1 kHz,1 V	2	0.4	10,20	101
SCD0403T-121□-AU	120	1 kHz,1 V	1.8	0.38	10,20	121
SCD0403T-151□-AU	150	1 kHz,1 V	2.8	0.3	10,20	151
SCD0403T-181□-AU	180	1 kHz,1 V	3.2	0.25	10,20	181
SCD0403T-221□-AU	220	1 kHz,1 V	4	0.15	10,20	221
SCD0403T-331□-AU	330	1 kHz,1 V	5.85	0.21	10,20	331

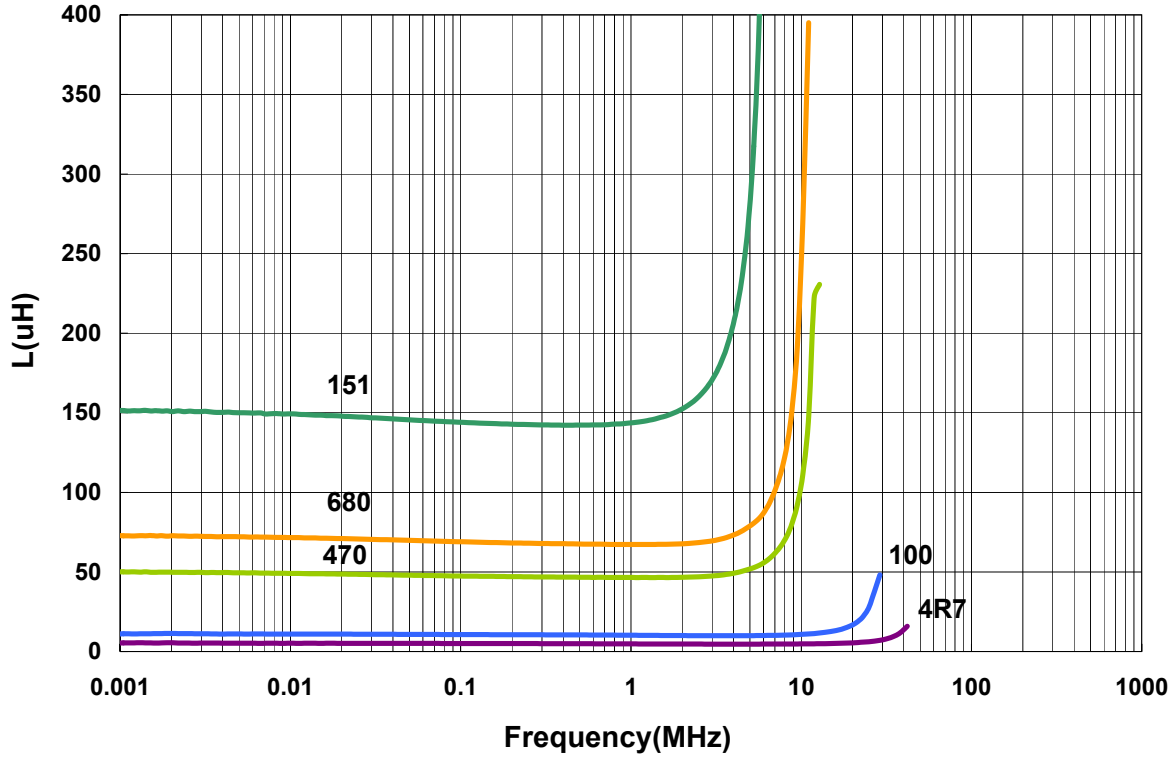
**Note: When ordering, please specify tolerance code. Tolerance: K=±10% / M=±20% / T=±30%**

1. Operating temperature range - 40°C ~ 125°C(Including self - temperature rise)
2. Isat for Inductance drop 10% from its value without current
3. Measure Equipment:  
 L: Agilent E4980 or HP4284A (over 1MHz), HP4285A (under 1MHz)  
 RDC: Chroma 16502  
 Isat: HP4284+42841A or WK3260B+WK3265B

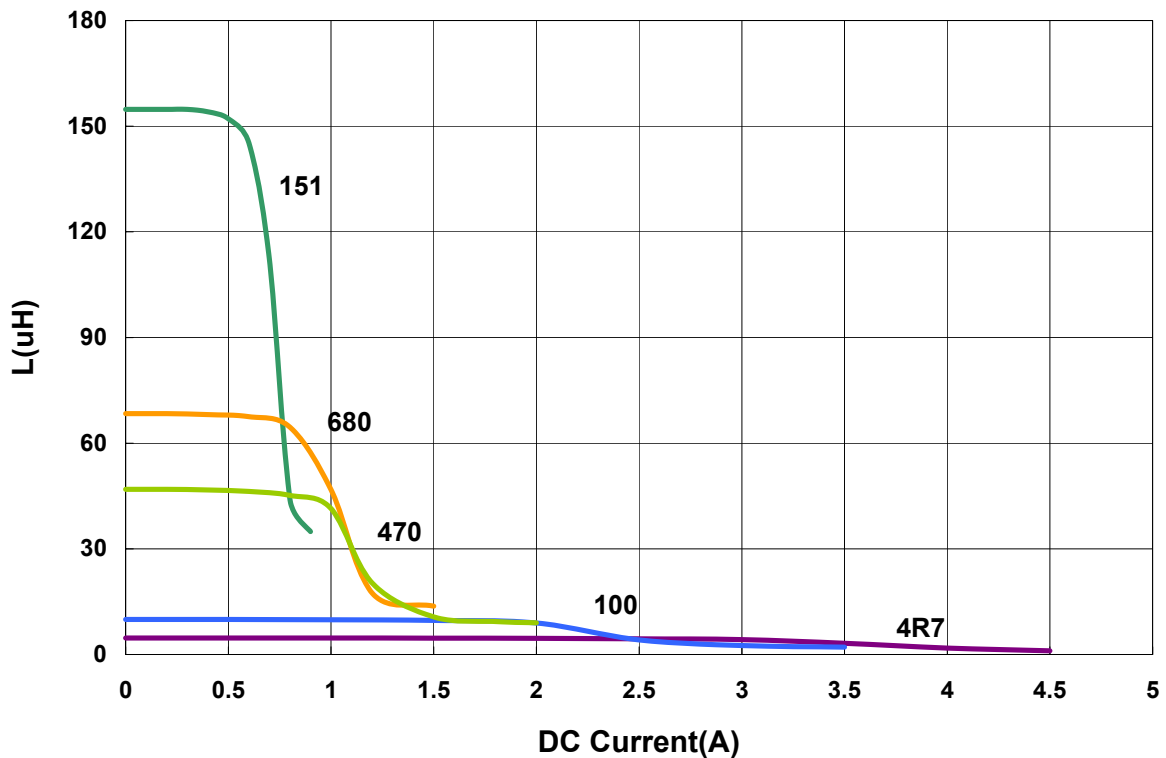
SCD0403 - AU Type

■ Characteristics Graph

Inductance vs. Frequency Charateristics



Inductance vs. DC Current



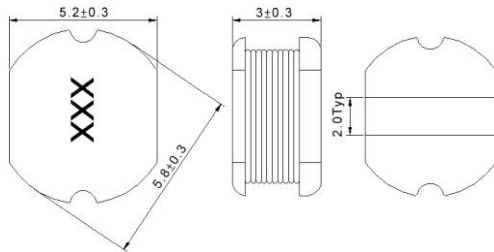
"Please be sure to request approval specifications that provide further details of the products. Kindly note that the content of these specifications are subject to change or may be discontinued without advance notice. Please contact our sales department before ordering."

**Power Inductor SCD Series**

**Automotive  
AEC-Q200**

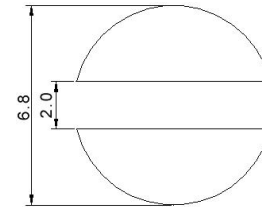
**SCD0503 - AU Type**

**■ Dimensions**



unit:mm

**■ Recommended Land Pattern**



unit:mm

**■ Electrical Characteristics**

Part No.	Inductance (uH)	Test Freq.	RDC (Ω)Max.	Isat (A)	Tolerance (±%)	Marking
SCD0503T-1R0□-AU	1	7.96 MHz,1 V	0.03	4.5	20	1R0
SCD0503T-1R2□-AU	1.2	7.96 MHz,1 V	0.03	4.2	20	1R2
SCD0503T-1R5□-AU	1.5	7.96 MHz,1 V	0.03	4.1	20	1R5
SCD0503T-1R8□-AU	1.8	7.96 MHz,1 V	0.03	3.7	10,20	1R8
SCD0503T-2R0□-AU	2	7.96 MHz,1 V	0.03	3.6	20	2R0
SCD0503T-2R2□-AU	2.2	7.96 MHz,1 V	0.03	3.5	20	2R2
SCD0503T-2R7□-AU	2.7	7.96 MHz,1 V	0.04	3.2	20	2R7
SCD0503T-3R3□-AU	3.3	7.96 MHz,1 V	0.05	2.8	10,20	3R3
SCD0503T-3R9□-AU	3.9	7.96 MHz,1 V	0.06	2.6	20	3R9
SCD0503T-4R7□-AU	4.7	7.96 MHz,1 V	0.07	2.5	10,20	4R7
SCD0503T-5R6□-AU	5.6	7.96 MHz,1 V	0.08	2.4	20	5R6
SCD0503T-6R8□-AU	6.8	7.96 MHz,1 V	0.09	2.2	20	6R8
SCD0503T-8R2□-AU	8.2	7.96 MHz,1 V	0.1	2	20	8R2
SCD0503T-100□-AU	10	2.52 MHz,1 V	0.12	1.8	10,20	100
SCD0503T-120□-AU	12	2.52 MHz,1 V	0.13	1.75	20	120
SCD0503T-150□-AU	15	2.52 MHz,1 V	0.15	1.7	10,20	150
SCD0503T-180□-AU	18	2.52 MHz,1 V	0.22	1.6	10,20	180
SCD0503T-220□-AU	22	2.52 MHz,1 V	0.22	1.5	10,20	220
SCD0503T-270□-AU	27	2.52 MHz,1 V	0.26	1.4	20	270
SCD0503T-330□-AU	33	2.52 MHz,1 V	0.33	1.1	10,20	330
SCD0503T-390□-AU	39	2.52 MHz,1 V	0.42	1	10,20	390
SCD0503T-470□-AU	47	2.52 MHz,1 V	0.5	0.9	10,20	470
SCD0503T-560□-AU	56	2.52 MHz,1 V	0.55	0.85	10,20	560
SCD0503T-680□-AU	68	2.52 MHz,1 V	0.65	0.8	10,20	680
SCD0503T-820□-AU	82	2.52 MHz,1 V	0.8	0.65	10,20	820
SCD0503T-101□-AU	100	1 kHz,1 V	0.9	0.6	10,20	101
SCD0503T-121□-AU	120	1 kHz,1 V	1	0.58	10,20	121
SCD0503T-151□-AU	150	1 kHz,1 V	1.3	0.43	10,20	151
SCD0503T-181□-AU	180	1 kHz,1 V	1.5	0.41	10,20	181
SCD0503T-221□-AU	220	1 kHz,1 V	2	0.38	10,20	221
SCD0503T-271□-AU	270	1 kHz,1 V	2.5	0.35	10,20	271
SCD0503T-331□-AU	330	1 kHz,1 V	3.2	0.28	10,20	331
SCD0503T-391□-AU	390	1 kHz,1 V	3.5	0.26	10,20	391

**Note: When ordering, please specify tolerance code. Tolerance: K=±10% / M=±20%**

1. Operating temperature range - 40°C ~ 125°C(Including self - temperature rise)
2. Isat for Inductance drop 10% from its value without current
3. Measure Equipment:  
 L: Agilent E4980 or HP4284A (over 1MHz), HP4285A (under 1MHz)  
 RDC: Chroma 16502  
 Isat: HP4284+42841A or WK3260B+WK3265B

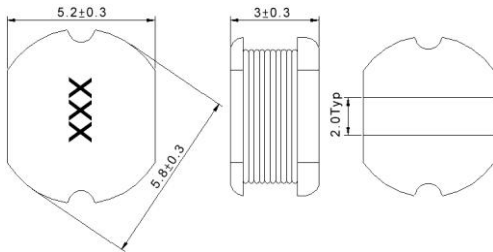
"Please be sure to request approval specifications that provide further details of the products. Kindly note that the content of these specifications are subject to change or may be discontinued without advance notice.Please contact our sales department before ordering."

**Power Inductor SCD Series**

**Automotive  
AEC-Q200**

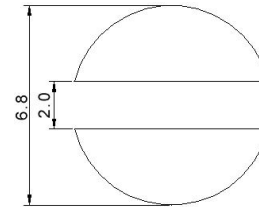
**SCD0503 - AU Type**

**■ Dimensions**



unit:mm

**■ Recommended Land Pattern**



unit:mm

**■ Electrical Characteristics**

Part No.	Inductance (uH )	Test Freq.	RDC (Ω)Max.	Isat (A)	Tolerance (±%)	Marking
SCD0503T-471□-AU	470	1 kHz,1 V	4.2	0.2	10,20	471
SCD0503T-561□-AU	560	1 kHz,1 V	4.5	0.19	10,20	561
SCD0503T-681□-AU	680	1 kHz,1 V	6.5	0.18	10,20	681
SCD0503T-821□-AU	820	1 kHz,1 V	7.5	0.15	10,20	821
SCD0503T-102□-AU	1000	1 kHz,1 V	8	0.13	10,20	102

**Note: When ordering, please specify tolerance code. Tolerance: K=±10% / M=±20%**

1. Operating temperature range - 40°C ~ 125°C(Including self - temperature rise)
2. Isat for Inductance drop 10% from its value without current
3. Measure Equipment:  
 L: Agilent E4980 or HP4284A (over 1MHz), HP4285A (under 1MHz)  
 RDC: Chroma 16502  
 Isat: HP4284+42841A or WK3260B+WK3265B

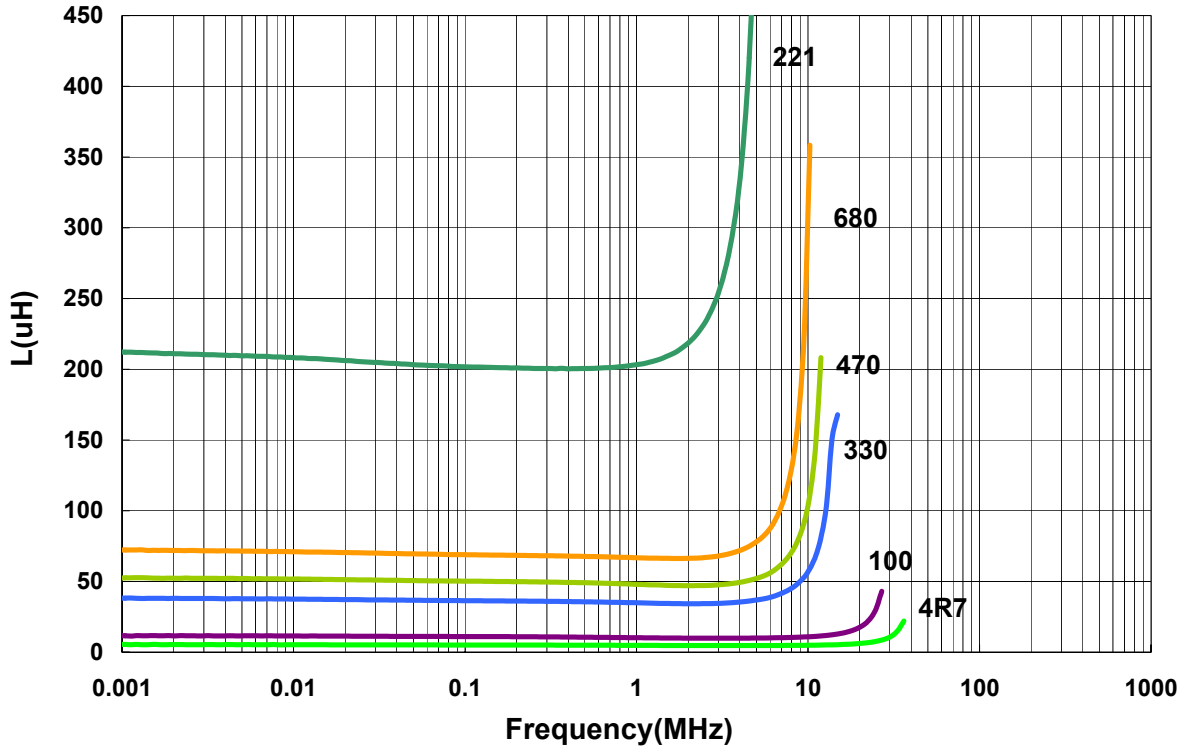
**Power Inductor SCD Series**

**Automotive  
AEC-Q200**

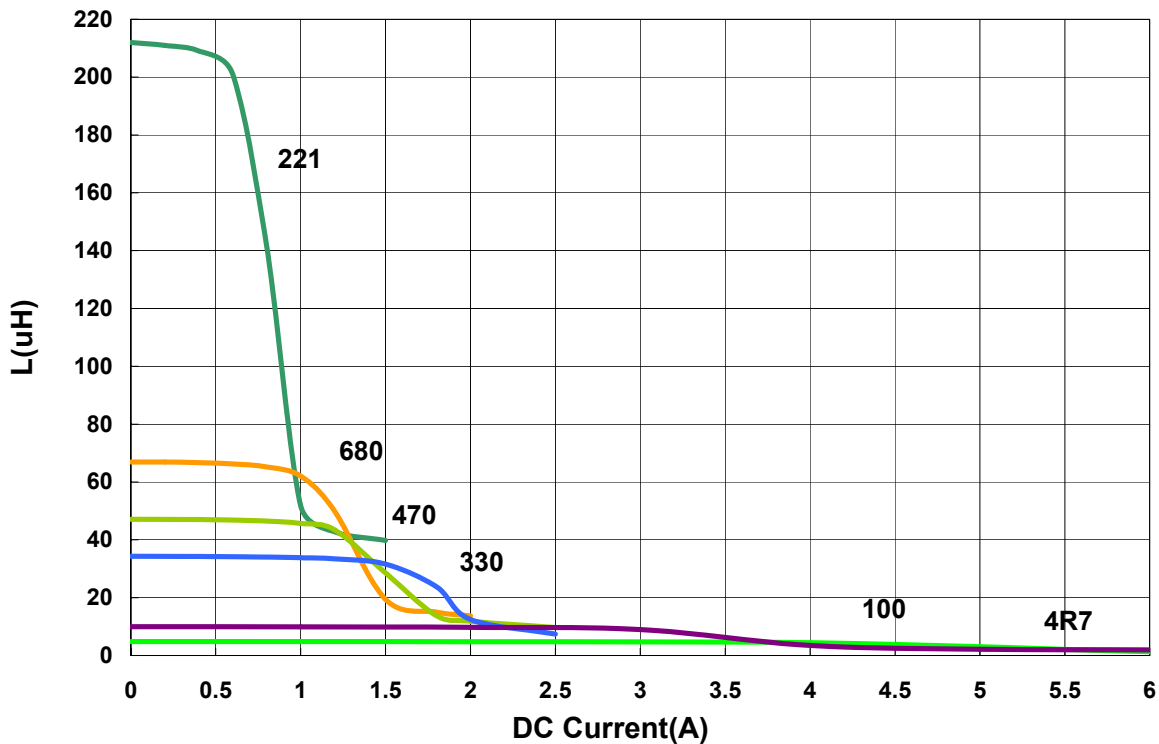
**SCD0503 - AU Type**

**Characteristics Graph**

**Inductance vs. Frequency Characteristics**



**Inductance vs. DC Current**



"Please be sure to request approval specifications that provide further details of the products. Kindly note that the content of these specifications are subject to change or may be discontinued without advance notice. Please contact our sales department before ordering."

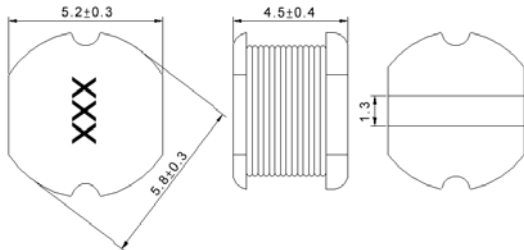


**Power Inductor SCD Series**

**Automotive  
AEC-Q200**

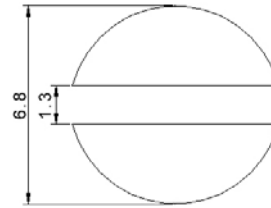
**SCD0504 - AU Type**

**■ Dimensions**



unit:mm

**■ Recommended Land Pattern**



unit:mm

**■ Electrical Characteristics**

Part No.	Inductance (uH)	Test Freq.	RDC (Ω)Max.	Isat (A)	Tolerance (±%)	Marking
SCD0504T-1R8□-AU	1.8	7.96 MHz,1 V	0.02	3.5	20	1R8
SCD0504T-2R2□-AU	2.2	7.96 MHz,1 V	0.023	3.2	20	2R2
SCD0504T-3R3□-AU	3.3	7.96 MHz,1 V	0.0314	2.59	10,20	3R3
SCD0504T-3R5□-AU	3.5	7.96 MHz,1 V	0.03	2.4	20	3R5
SCD0504T-4R7□-AU	4.7	7.96 MHz,1 V	0.0372	2.3	10,20	4R7
SCD0504T-6R8□-AU	6.8	7.96 MHz,1 V	0.057	1.8	20	6R8
SCD0504T-8R2□-AU	8.2	7.96 MHz,1 V	0.0594	1.7	20	8R2
SCD0504T-100□-AU	10	2.52 MHz,1 V	0.1	1.44	10,20	100
SCD0504T-120□-AU	12	2.52 MHz,1 V	0.12	1.4	20	120
SCD0504T-150□-AU	15	2.52 MHz,1 V	0.14	1.3	10,20	150
SCD0504T-180□-AU	18	2.52 MHz,1 V	0.15	1.23	20	180
SCD0504T-220□-AU	22	2.52 MHz,1 V	0.18	1.11	20	220
SCD0504T-270□-AU	27	2.52 MHz,1 V	0.2	0.97	20	270
SCD0504T-330□-AU	33	2.52 MHz,1 V	0.23	0.88	10,20	330
SCD0504T-390□-AU	39	2.52 MHz,1 V	0.32	0.8	10,20	390
SCD0504T-470□-AU	47	2.52 MHz,1 V	0.37	0.72	10,20	470
SCD0504T-560□-AU	56	2.52 MHz,1 V	0.42	0.68	10,20	560
SCD0504T-680□-AU	68	2.52 MHz,1 V	0.46	0.61	10,20	680
SCD0504T-820□-AU	82	2.52 MHz,1 V	0.6	0.58	10,20	820
SCD0504T-101□-AU	100	1 kHz,1 V	0.7	0.52	10,20	101
SCD0504T-121□-AU	120	1 kHz,1 V	0.93	0.48	10,20	121
SCD0504T-151□-AU	150	1 kHz,1 V	1.1	0.4	10,20	151
SCD0504T-181□-AU	180	1 kHz,1 V	1.38	0.38	10,20	181
SCD0504T-221□-AU	220	1 kHz,1 V	1.57	0.35	10,20	221
SCD0504T-271□-AU	270	1 kHz,1 V	1.85	0.29	10,20	271
SCD0504T-331□-AU	330	1 kHz,1 V	2	0.28	10,20	331
SCD0504T-391□-AU	390	1 kHz,1 V	2.6	0.26	10,20	391
SCD0504T-471□-AU	470	1 kHz,1 V	3	0.12	10,20	471
SCD0504T-561□-AU	560	1 kHz,1 V	4.19	0.1	10,20	561
SCD0504T-681□-AU	680	1 kHz,1 V	4.44	0.08	10,20	681
SCD0504T-821□-AU	820	1 kHz,1 V	5.12	0.05	10,20	821
SCD0504T-102□-AU	1000	1 kHz,1 V	10	0.03	10,20	102

**Note: When ordering, please specify tolerance code. Tolerance: K=±10% / M=±20%**

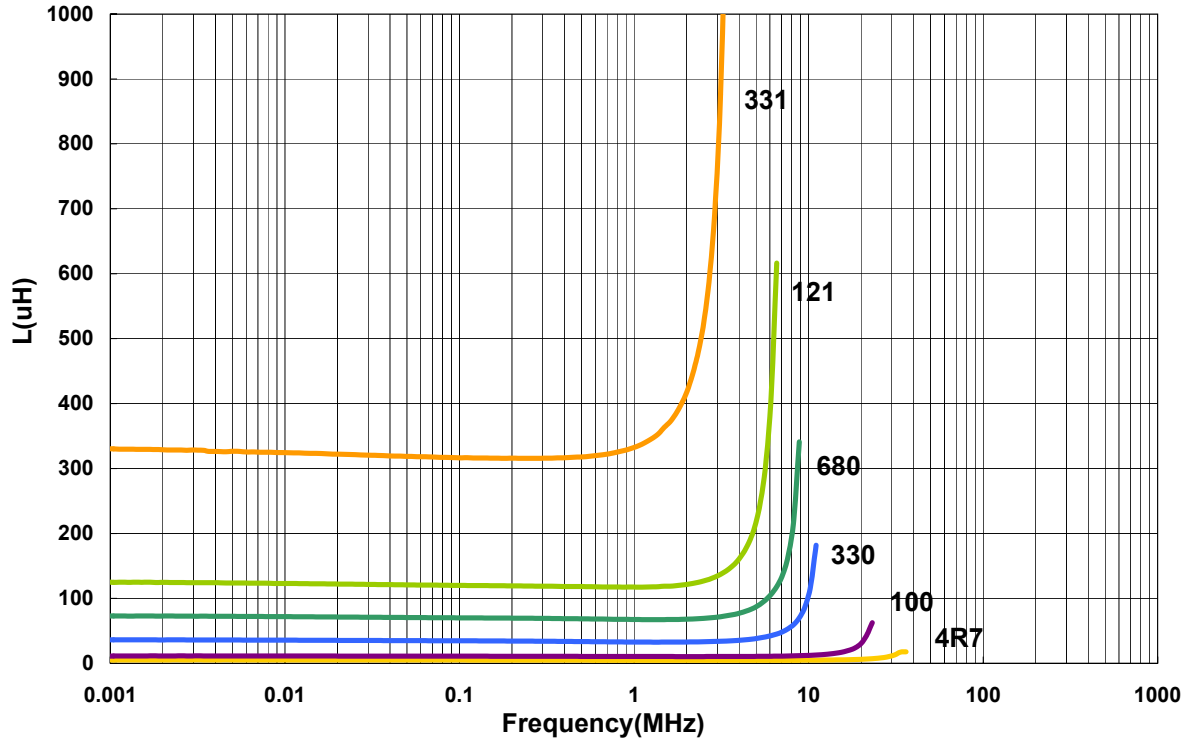
- Operating temperature range - 40°C ~ 125°C(Including self - temperature rise)
- Isat for Inductance drop 10% from its value without current
- Measure Equipment:  
 L: Agilent E4980 or HP4284A (over 1MHz), HP4285A (under 1MHz)  
 RDC: Chroma 16502  
 Isat: HP4284+42841A or WK3260B+WK3265B

"Please be sure to request approval specifications that provide further details of the products. Kindly note that the content of these specifications are subject to change or may be discontinued without advance notice.Please contact our sales department before ordering."

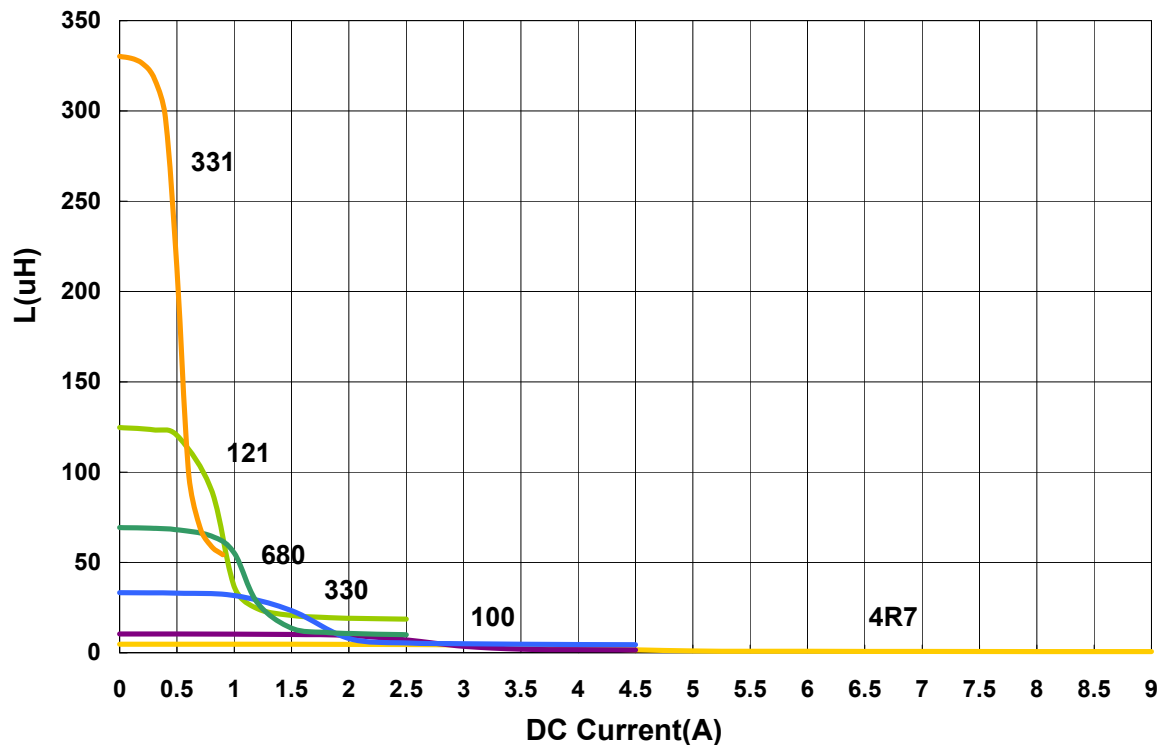
SCD0504 - AU Type

■ Characteristics Graph

Inductance vs. Frequency Charateristics



Inductance vs. DC Current



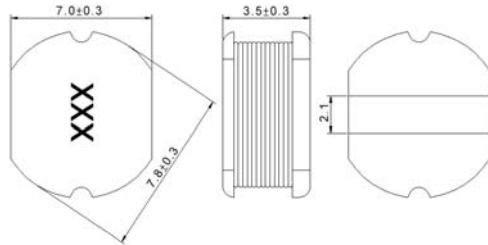
"Please be sure to request approval specifications that provide further details of the products. Kindly note that the content of these specifications are subject to change or may be discontinued without advance notice. Please contact our sales department before ordering."

**Power Inductor SCD Series**

**Automotive  
AEC-Q200**

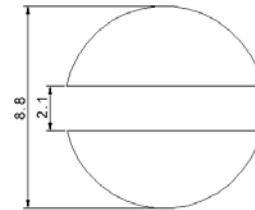
**SCD0703 - AU Type**

**■ Dimensions**



unit:mm

**■ Recommended Land Pattern**



unit:mm

**■ Electrical Characteristics**

Part No.	Inductance (uH )	Test Freq.	RDC (Ω)Max.	Isat (A)	Tolerance (±%)	Marking
SCD0703T-2R2□-AU	2.2	7.96 MHz,1 V	0.03	3.2	20	2R2
SCD0703T-4R7□-AU	4.7	2.52 MHz,1 V	0.04	1.6	20	4R7
SCD0703T-100□-AU	10	2.52 MHz,1 V	0.08	1.44	20	100
SCD0703T-120□-AU	12	2.52 MHz,1 V	0.09	1.39	10,20	120
SCD0703T-150□-AU	15	2.52 MHz,1 V	0.1	1.24	10,20	150
SCD0703T-180□-AU	18	2.52 MHz,1 V	0.11	1.12	20	180
SCD0703T-220□-AU	22	2.52 MHz,1 V	0.13	1.07	20	220
SCD0703T-270□-AU	27	2.52 MHz,1 V	0.15	0.94	20	270
SCD0703T-330□-AU	33	2.52 MHz,1 V	0.17	0.85	10,20	330
SCD0703T-390□-AU	39	2.52 MHz,1 V	0.22	0.74	10,20	390
SCD0703T-470□-AU	47	2.52 MHz,1 V	0.25	0.68	10,20	470
SCD0703T-560□-AU	56	2.52 MHz,1 V	0.28	0.64	10,20	560
SCD0703T-680□-AU	68	2.52 MHz,1 V	0.33	0.59	10,20	680
SCD0703T-820□-AU	82	2.52 MHz,1 V	0.41	0.54	10,20	820
SCD0703T-101□-AU	100	1 kHz,1 V	0.48	0.51	10,20	101
SCD0703T-121□-AU	120	1 kHz,1 V	0.54	0.49	10,20	121
SCD0703T-151□-AU	150	1 kHz,1 V	0.75	0.4	10,20	151
SCD0703T-181□-AU	180	1 kHz,1 V	1.02	0.36	10,20	181
SCD0703T-221□-AU	220	1 kHz,1 V	1.2	0.31	10,20	221
SCD0703T-271□-AU	270	1 kHz,1 V	1.31	0.29	10,20	271
SCD0703T-331□-AU	330	1 kHz,1 V	1.5	0.28	10,20	331
SCD0703T-561□-AU	560	1 kHz,1 V	2.5	0.14	10,20	561

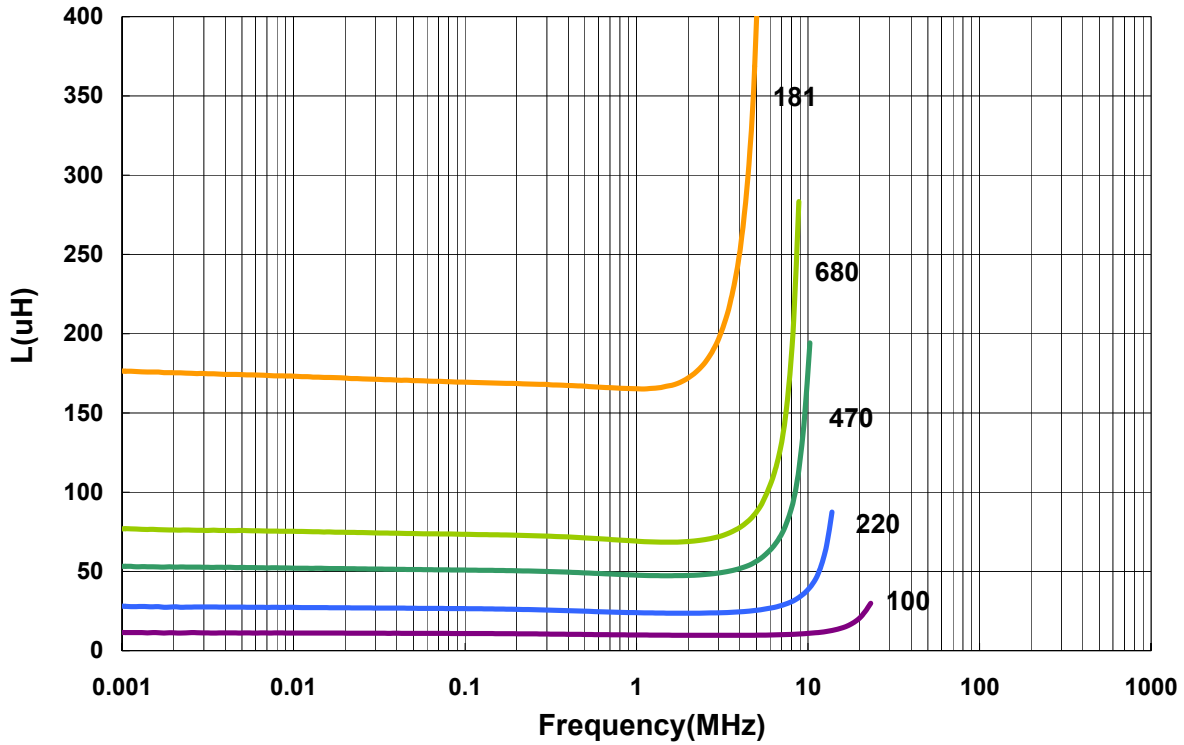
**Note: When ordering, please specify tolerance code. Tolerance: K=±10% / M=±20%**

1. Operating temperature range - 40°C ~ 125°C(Including self - temperature rise)
2. Isat for Inductance drop 10% from its value without current
3. Measure Equipment:
  - L: Agilent E4980 or HP4284A (over 1MHz), HP4285A (under 1MHz)
  - RDC: Chroma 16502
  - Isat: HP4284+42841A or WK3260B+WK3265B

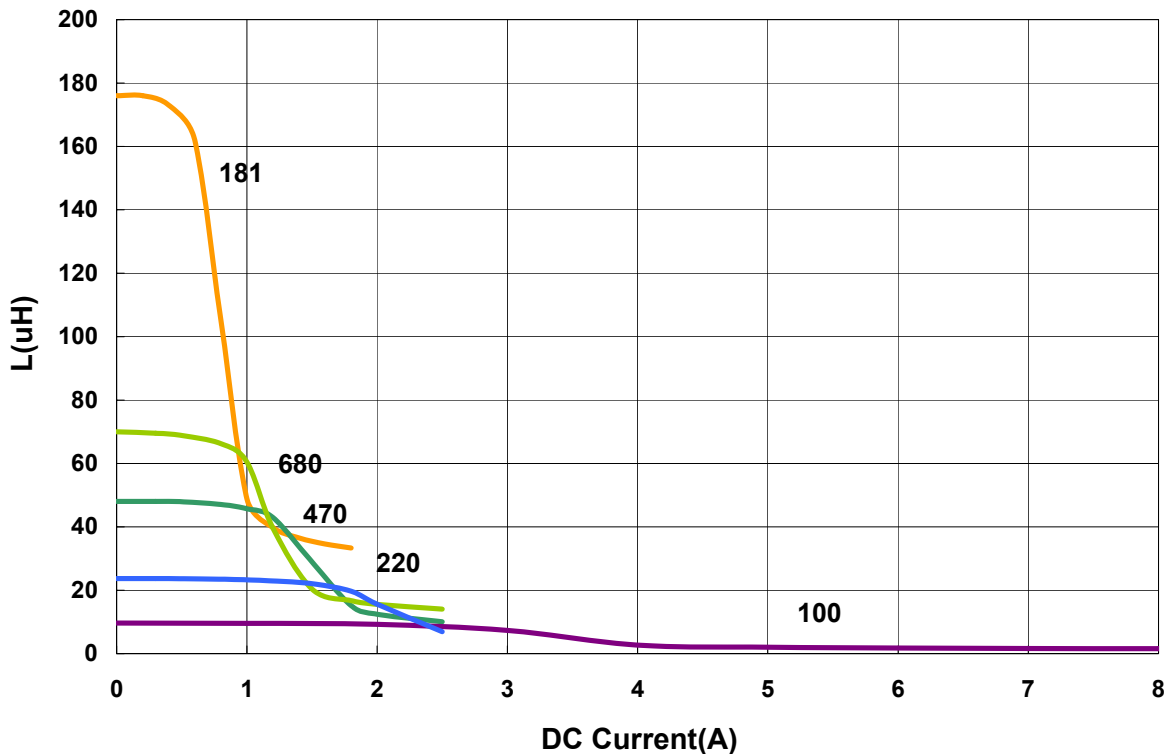
SCD0703 - AU Type

■ Characteristics Graph

Inductance vs. Frequency Charateristics



Inductance vs. DC Current



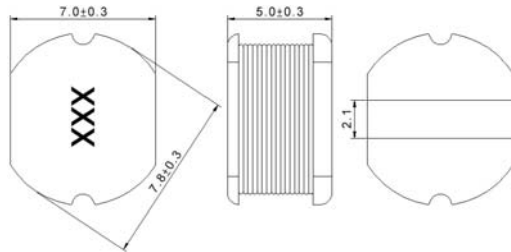
"Please be sure to request approval specifications that provide further details of the products. Kindly note that the content of these specifications are subject to change or may be discontinued without advance notice. Please contact our sales department before ordering."

**Power Inductor SCD Series**

**Automotive  
AEC-Q200**

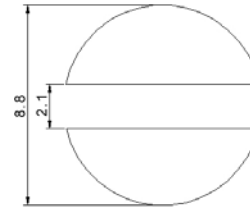
**SCD0705 - AU Type**

**■ Dimensions**



unit:mm

**■ Recommended Land Pattern**



unit:mm

**■ Electrical Characteristics**

Part No.	Inductance (uH)	Test Freq.	RDC (Ω)Max.	Isat (A)	Tolerance (±%)	Marking
SCD0705T-1R4□-AU	1.4	7.96 MHz,1 V	0.02	3.7	20	1R4
SCD0705T-1R5□-AU	1.5	7.96 MHz,1 V	0.02	3.7	20	1R5
SCD0705T-1R8□-AU	1.8	7.96 MHz,1 V	0.02	3.7	20	1R8
SCD0705T-2R2□-AU	2.2	7.96 MHz,1 V	0.02	3.7	20	2R2
SCD0705T-2R7□-AU	2.7	7.96 MHz,1 V	0.02	3.7	20	2R7
SCD0705T-3R0□-AU	3	7.96 MHz,1 V	0.025	3.7	20	3R0
SCD0705T-3R3□-AU	3.3	7.96 MHz,1 V	0.03	3.7	20	3R3
SCD0705T-3R6□-AU	3.6	7.96 MHz,1 V	0.03	3.7	20	3R6
SCD0705T-3R9□-AU	3.9	7.96 MHz,1 V	0.03	3.7	20	3R9
SCD0705T-4R7□-AU	4.7	7.96 MHz,1 V	0.04	3.5	10,20	4R7
SCD0705T-5R6□-AU	5.6	7.96 MHz,1 V	0.04	3.3	20	5R6
SCD0705T-6R8□-AU	6.8	7.96 MHz,1 V	0.04	3.1	20	6R8
SCD0705T-8R2□-AU	8.2	7.96 MHz,1 V	0.05	2.7	20	8R2
SCD0705T-100□-AU	10	2.52 MHz,1 V	0.07	2.3	10,20	100
SCD0705T-120□-AU	12	2.52 MHz,1 V	0.08	2	20	120
SCD0705T-150□-AU	15	2.52 MHz,1 V	0.09	1.8	10,20	150
SCD0705T-180□-AU	18	2.52 MHz,1 V	0.1	1.6	20	180
SCD0705T-220□-AU	22	2.52 MHz,1 V	0.11	1.5	10,20	220
SCD0705T-270□-AU	27	2.52 MHz,1 V	0.12	1.3	20	270
SCD0705T-330□-AU	33	2.52 MHz,1 V	0.13	1.2	10,20	330
SCD0705T-390□-AU	39	2.52 MHz,1 V	0.16	1.1	10,20	390
SCD0705T-470□-AU	47	2.52 MHz,1 V	0.18	1.1	10,20	470
SCD0705T-560□-AU	56	2.52 MHz,1 V	0.24	0.94	10,20	560
SCD0705T-680□-AU	68	2.52 MHz,1 V	0.28	0.85	10,20	680
SCD0705T-820□-AU	82	2.52 MHz,1 V	0.37	0.78	10,20	820
SCD0705T-101□-AU	100	1 kHz,1 V	0.43	0.72	10,20	101
SCD0705T-121□-AU	120	1 kHz,1 V	0.47	0.66	10,20	121
SCD0705T-151□-AU	150	1 kHz,1 V	0.64	0.58	10,20	151
SCD0705T-181□-AU	180	1 kHz,1 V	0.71	0.51	10,20	181
SCD0705T-221□-AU	220	1 kHz,1 V	0.96	0.49	10,20	221

**Note: When ordering, please specify tolerance code. Tolerance: K=±10% / M=±20%**

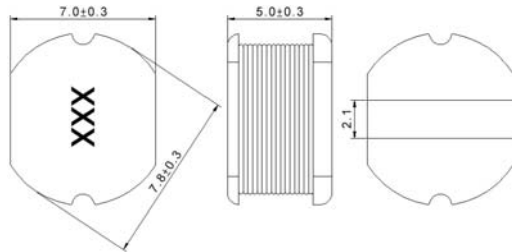
1. Operating temperature range - 40°C ~ 125°C(Including self - temperature rise)
2. Isat for Inductance drop 10% from its value without current
3. Measure Equipment:  
 L: Agilent E4980 or HP4284A (over 1MHz), HP4285A (under 1MHz)  
 RDC: Chroma 16502  
 Isat: HP4284+42841A or WK3260B+WK3265B

**Power Inductor SCD Series**

**Automotive  
AEC-Q200**

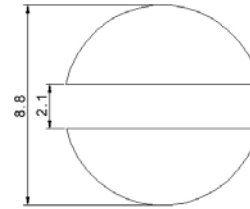
**SCD0705 - AU Type**

**■ Dimensions**



unit:mm

**■ Recommended Land Pattern**



unit:mm

**■ Electrical Characteristics**

Part No.	Inductance (uH)	Test Freq.	RDC (Ω)Max.	Isat (A)	Tolerance (±%)	Marking
SCD0705T-271□-AU	270	1 kHz,1 V	1.11	0.42	10,20	271
SCD0705T-331□-AU	330	1 kHz,1 V	1.26	0.4	10,20	331
SCD0705T-391□-AU	390	1 kHz,1 V	1.77	0.36	10,20	391
SCD0705T-471□-AU	470	1 kHz,1 V	1.96	0.34	10,20	471
SCD0705T-561□-AU	560	1 kHz,1 V	2.41	0.32	10,20	561
SCD0705T-681□-AU	680	1 kHz,1 V	2.5	0.29	10,20	681
SCD0705T-102□-AU	1000	1 kHz,1 V	2.8	0.19	10,20	102

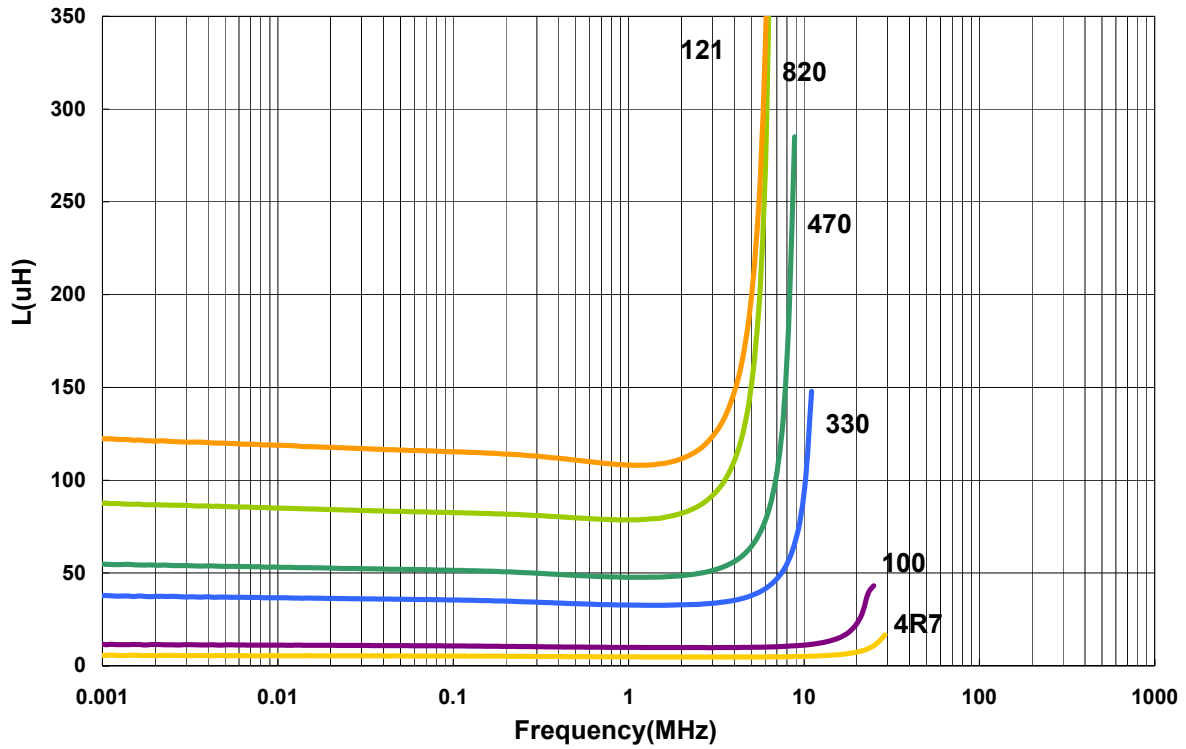
**Note: When ordering, please specify tolerance code. Tolerance: K=±10% / M=±20%**

1. Operating temperature range - 40°C ~ 125°C(Including self - temperature rise)
2. Isat for Inductance drop 10% from its value without current
3. Measure Equipment:  
 L: Agilent E4980 or HP4284A (over 1MHz), HP4285A (under 1MHz)  
 RDC: Chroma 16502  
 Isat: HP4284+42841A or WK3260B+WK3265B

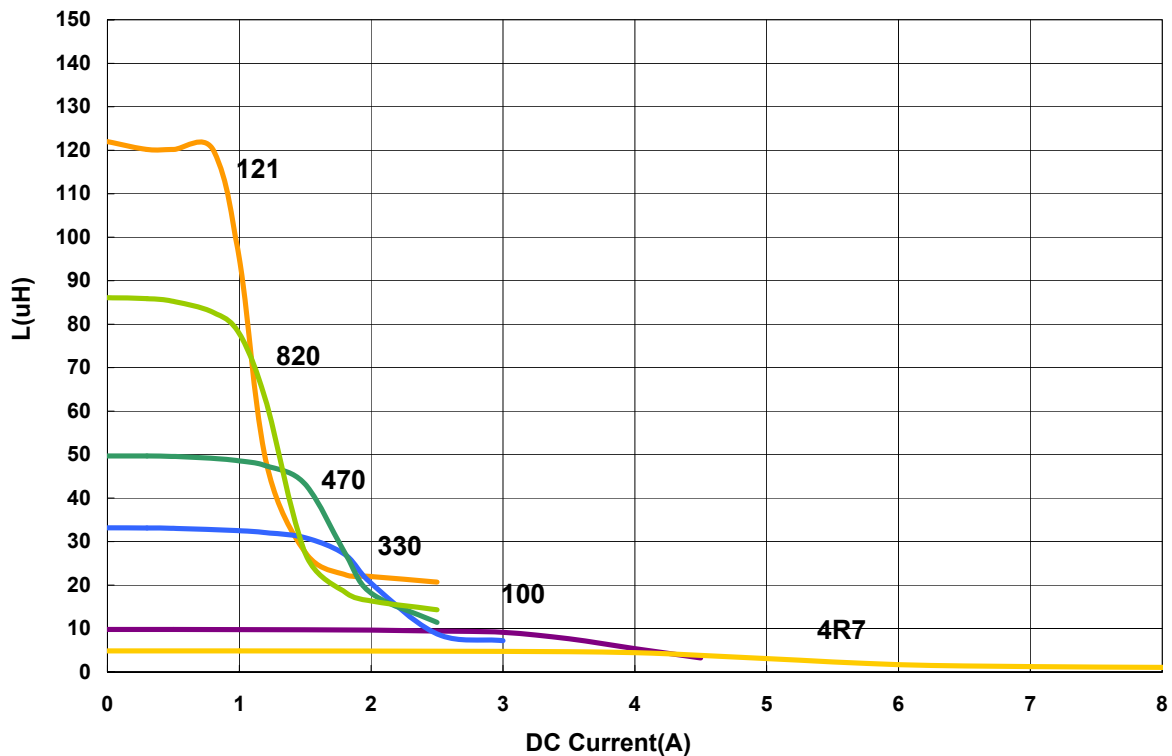
SCD0705 - AU Type

■ Characteristics Graph

Inductance vs. Frequency Charateristics



Inductance vs. DC Current



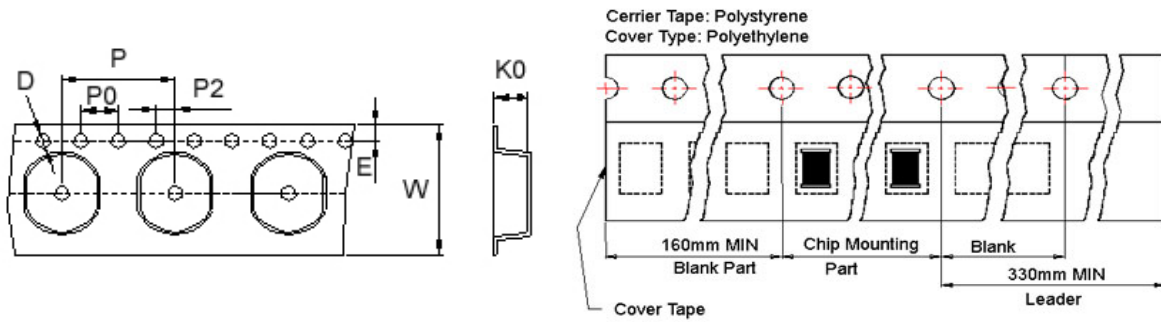
"Please be sure to request approval specifications that provide further details of the products. Kindly note that the content of these specifications are subject to change or may be discontinued without advance notice. Please contact our sales department before ordering."

**Power Inductor SCD Series**

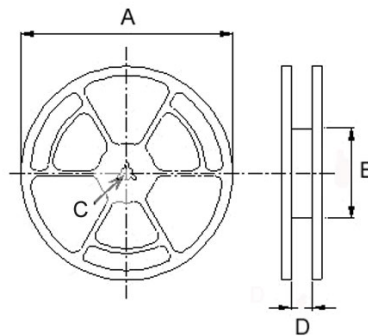
**Automotive  
AEC-Q200**

**■ Packaging**

Tape Dimensions



Reel Dimensions



Dimensions in mm

TYPE	Tape Dimensions							Reel Dimensions				Quantity PCS / REEL
	K0	D	E	W	P	P0	P2	A	B	C	D	
SCD03021	2.5	1.55	1.75	12	8	4	2	330	100	13	13.4	3000
SCD0403	3.55	1.55	1.75	12	8	4	2	330	100	13	13.4	2000
SCD0503	3.3	1.5	1.75	16	8	4	2	330	100	13	17.4	2000
SCD0504	4.8	1.55	1.75	16	8	4	2	330	100	13	17.4	1500
SCD0703	3.8	1.55	1.75	16	12	4	2	330	100	13	17.4	1000
SCD0705	5.2	1.55	1.75	16	12	4	2	330	100	13	17.4	700