

AM20S-FC

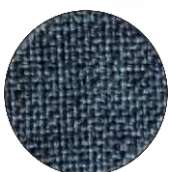


Ergonomic chair upholstered with conductive fabric, with aluminum base, with a waterfall, a lever mechanism that adjusts height, hydraulic cylinder, adjustable footring, it has a chrome back bar that adjust the backrest in height and depth by turning the plastic knobs.

Chair recommended for areas where electronic components are manufactured or where static electricity plays an important role.



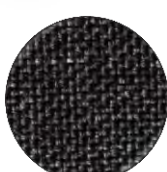
Black-452



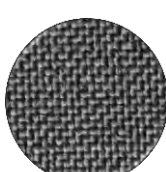
Blue-413



Burg-462



Charc-441



Gray-431



Navy-421

Conductive fabric colours available



DIVERSE
ELECTRONICS

Shop online at diverseelectronics.com

1-800-381-7308 • sales@diverseelectronics.com



Montreal 514-388-7308 Toronto 647-969-0709

Ottawa 343-550-2722 Vancouver 604-787-8266

DESCRIPTION

MODEL	AM20S-FC
WATERFALL	Yes
Seat Depth	18"
Seat Width	18"
BACK HEIGHT	16"
BACK WIDTH	16"
MATERIAL	Fabric
BASE	Aluminum 26"
BACK BAR	Chrome
CAPACITY	450 lbs.
CONTROL	Single Lever
HEIGHT RANGE	Bench Height 24"-34"
FOOTRING	18"
CASTERS	ESD Nylon
Seat Foam Density	2.5" High Resilient
ESD SAFE	Esd Safe

AM22S-FC

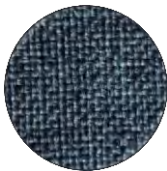


Ergonomic chair upholstered with conductive fabric, with aluminum base, with a waterfall, a lever mechanism that adjusts height, hydraulic cylinder, adjustable footring, it has a chrome back bar to adjust the backrest in height and depth by turning the plastic knobs.

Chair recommended for areas where electronic components are manufactured or where static electricity plays an important role.



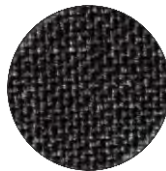
Black-452



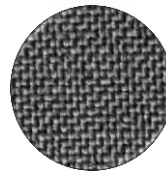
Blue-413



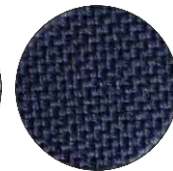
Burg-462



Charc-441



Gray-431



Navy-421

Conductive fabric colours available



DIVERSE
ELECTRONICS

Shop online at diverseelectronics.com

1-800-381-7308 • sales@diverseelectronics.com



Montreal **514-388-7308** Toronto **647-969-0709**

Ottawa **343-550-2722** Vancouver **604-787-8266**

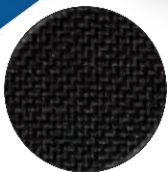
DESCRIPTION	
MODEL	AM22S-FC
WATERFALL	Yes
SEAT DEPTH	18"
SEAT WIDTH	18"
BACK HEIGHT	16"
BACK WIDTH	16"
MATERIAL	Fabric
BASE	Aluminum 26"
BACK BAR	Chrome
CAPACITY	450 lbs.
CONTROL	Single Lever
HEIGHT RANGE	Desk Height 17"-22"
FOOTRING	
CASTERS	ESD Nylon
SEAT FOAM DENSITY	2.5" High Resilient
ESD SAFE	Esd Safe

PM20S-FC



Ergonomic chair upholstered with conductive fabric, with plastic base, with a waterfall, a lever mechanism that adjusts height, hydraulic cylinder, adjustable footring, it has a chrome back bar to adjust the backrest in height and depth by turning the plastic knobs.

Chair recommended for areas where electronic components are manufactured or where static electricity plays an important role.



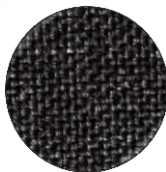
Black-452



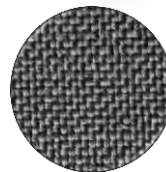
Blue-413



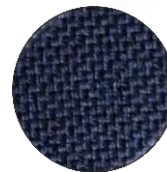
Burg-462



Charc-441

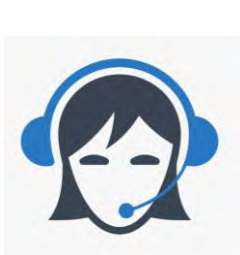


Gray-431



Navy-421

Conductive fabric colours available



DIVERSE
ELECTRONICS

Shop online at diverseelectronics.com

1-800-381-7308 • sales@diverseelectronics.com



Montreal 514-388-7308 Toronto 647-969-0709
Ottawa 343-550-2722 Vancouver 604-787-8266

DESCRIPTION	
MODEL	PM20S-FC
WATERFALL	Yes
SEAT DEPTH	18"
SEAT WIDTH	18"
BACK HEIGHT	16"
BACK WIDTH	16"
MATERIAL	Fabric
BASE	Plastic Nylon 24"
BACK BAR	Chrome
CAPACITY	450 lbs.
CONTROL	Single Lever
HEIGHT RANGE	Bench Height 24"-34"
FOOTRING	18"
CASTERS	Plastic Nylon with Drag Chain
SEAT FOAM DENSITY	2.5" High Resilient
ESD SAFE	Esd Safe

PM22S-FC

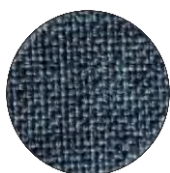


Ergonomic chair upholstered with conductive fabric, with plastic base, with a waterfall, a lever mechanism that adjusts height, hydraulic cylinder, adjustable footring, it has a chrome back bar to adjust the backrest in height and depth by turning the plastic knobs.

Chair recommended for areas where electronic components are manufactured or where static electricity plays an important role.



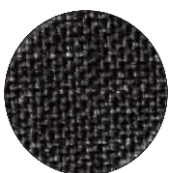
Black-452



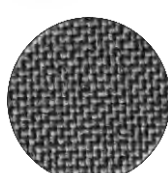
Blue-413



Burg-462



Charc-441

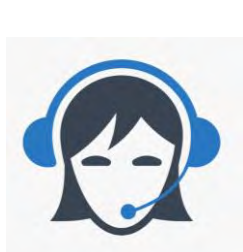


Gray-431



Navy-421

Conductive fabric colours available



DIVERSE
ELECTRONICS

Shop online at diverseelectronics.com

1-800-381-7308 • sales@diverseelectronics.com



Montreal 514-388-7308 Toronto 647-969-0709

Ottawa 343-550-2722 Vancouver 604-787-8266

DESCRIPTION	
MODEL	PM22S-FC
WATERFALL	Yes
SEAT DEPTH	18"
SEAT WIDTH	18"
BACK HEIGHT	16"
BACK WIDTH	16"
MATERIAL	Fabric
BASE	Plastic Nylon 24"
BACK BAR	Chrome
CAPACITY	450 lbs.
CONTROL	Single Lever
HEIGHT RANGE	Desk Height 17"-22"
FOOTRING	
CASTERS	Plastic Nylon with Drag Chain
SEAT FOAM DENSITY	2.5" High Resilient
ESD SAFE	Esd Safe

Choose from any of the following options:

Controls



DLC

Height and Back Tilt (This control has two levers for seat height and back angle adjustment and back height adjustment with knob).



ST

Height and Seat and Back Tilt (This control has two levers, one for height adjustment and the other for Seat and Back tilt adjustment and back height with knob.



FLC

Three Lever for Individual Lif (Height lever adjustment, seat tilt adjustment back tilt adjustment and height back adjustment with knob and a seat tension knob).

Footrings



FR04

Knobless Nylon Footring
18"

The Footring is Loosened and Tightened by Turning the Outer Ring. (option for models 20S, 45, 50 and 60)



FR05

Knobless Aluminum with
Steel Ring 20"
The Footring is Loosened and Tightened by Turning the Outer Footring. (option for models 10, 20M and 20W)



FR06

Nylon Center with Steel
Ring, Footring 18"
(option for models 20S,
45, 50 and 60)

Arms



TF-BX-C

Fixed Height and
Width, with Chrome
Arm Frames & ESD Arm
Pads



TA-BX-C

Fixed Height and Adjustable
Width, with Chrome Arm
Frames & ESD Arm Pads



TAA-BX-C

Adjustable Height and
Adjustable Width, with
Chrome Arm Frames &
ESD Arm Pads

Casters



9B

ESD Braking Caster ,
Recommended where Chairs
may roll to easily when is
Not Occupied



9U

ESD Soft Urethane
Caster, Recommended
on Tile, Cement and
other Hard
Surfaces



9UB

ESD Soft Urethane
Braking Caster,
Recommended for
reduce Mobility when is
Not Occupied



11

ESD Nylon Glide,
Recommended for
use in areas where
requiring limited
mobility