

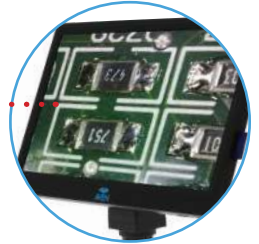


Macro Vue Eidos

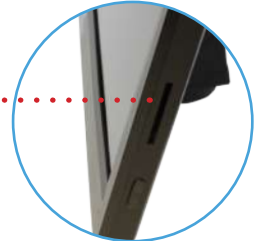
Video Inspection Systems



11.6" HD Monitor



SD Card Port



USB Output



Have It All

Aven's Macro Vue Eidos video inspection systems were designed with the operator in mind. The crystal clear 1080p 11.6" display provides sharp, true-to-life images without the need to frequently look through microscope eyepieces. Features a built-in SD card port for easy image and video capture, as well as a USB output for computer connectivity.

Features

- Improves inspection quality, reduce eye strain and fatigue
- Space-saving designs
- Wide range zoom lens
- LED Ring Light with brightness control
- Magnification range: 3.5x to 35.5x at a 6 inch working distance

Macro Vue Eidos Inspection Systems

Sensor	CMOS 1920x1080 FULL HD Panasonic 1/2.8"
Efficiency Resolution	1920* 1080
Pixel Size	2.75*2.75um
LCD	11.6 1080p Resolution IPS Panasonic LCD
LED Lighting	6 LEDs with brightness control
Frame Rate	60FPS
White Balance	Automatic/Manual
Power Source	Power Adapter (5V-2A) with USB OUT port
Power Consumption	5V/470 mA
Mount	C Mount
USB Interface	usb2.0 (Type A)
SD Card Interface	SD2.0,standard card,invisible design,Max 32G.
Magnification	3.5x to 35.5x at a 6 inch working distance

Part #	Description
26700-117	Macro Vue Eidos Video Inspection System with Standard Stand
26700-118	Macro Vue Eidos Video Inspection System with Gliding Boom Stand