

LT5

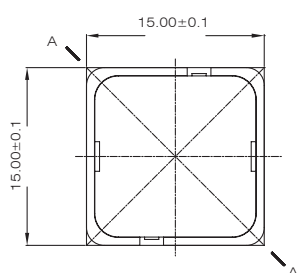


## SPECIFICATIONS

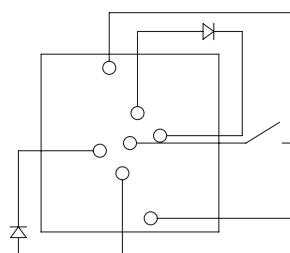
CONTACT RATING: 100mA max, 42 VAC/DC  
MECHANICAL LIFE: 1,000,000 cycles  
CONTACT RESISTANCE: 100mΩ max. (initial)  
INSULATION RESISTANCE: 1,000MΩ min.  
DIELECTRIC STRENGTH: 2,000VAC  
OPERATION FORCE: 3N ± 0.75N max

## MATERIALS

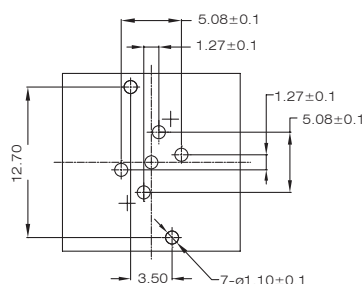
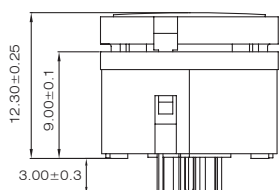
SWITCH HOUSING: PBT/PA46 (UL94 V-0)  
TRANSPARENT ACTUATOR: PC (UL94 V-0)  
ACTUATOR: ABS  
CONTACT: Stainless, Au version tin-plated  
TERMINALS: Brass, Au version tin-plated  
TERMINAL SEAL: Epoxy



CIRCUIT DRAWING



PC MOUNTING



## HOW TO ORDER

LT5 - 15 - HT - B 1 - ☐ - ☐ / ☐ - ☐ - ☐

LT Series

Size:

15: 15×15mm

19: 19×19mm

HT Material:

☐ = none

HT = HIGH Temperature

Actuator:

Color panel Actuator

Actuator color:

1: white

3: red

5: yellow

6: green

7: blue

LED quantity:

☐ = standard

(the actuator is as same as the color of LED)

0: no LED

1: one LED

2: two LED

(the actuator is not as same as the color of LED)

RoHS CODE:

H = RoHS Compliant

Contact material:

☐ = Au version tin- plated

Q = silver plated

Another LED color:

☐ = standard

1: white 3: red

5: yellow 6: green

7: blue

66L: pure green high lightness

LED color:

☐ = standard

1: white 3: red

5: yellow 6: green

7: blue

66L: pure green high lightness