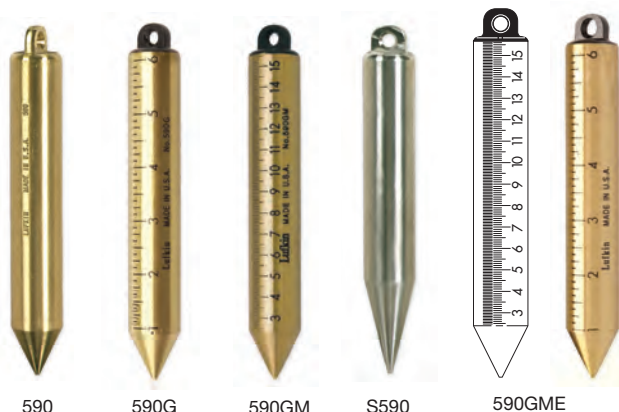


## Inage Oil Gauging Plumb Bobs

- For use in heavy oils
- 20-ounce, except for 588 (6oz.)
- Cylindrical shaped
- Tapered point tip
- Solid brass or stainless steel bob



590

590G

590GM

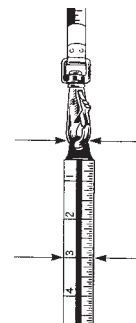
S590

590GME

Cat. No.	UPC No.	Description	Shelf Pack
590	037103453204	20oz. solid brass inage Plumb bob cylindrical shape, 1" x 6 3/4"	1
590G	037103453235	20oz. solid brass bob; graduated in inches to 1/8ths, reading upward; blunt point	1
590GM	037103453242	20oz. solid brass bob; graduated millimeters with centimeters numbered	1
590GME	037103442895	20oz. solid brass bob; graduated in inches to 1/8ths, reading upward	1
S590	037103460134	20oz. cylindrical shape stainless steel bob, 1" x 6 3/4"	1

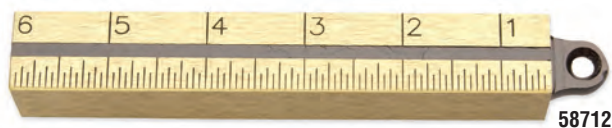
## How To Measure With an Outage Plumb Bob

Tapes which have the swivel snap fitted so as to accommodate the 5871/2 plumb bob are known as outage tapes. When the 5871/2 plumb bob is assembled to the tape line the zero point is at the intersection of the swivel snap and the plumb bob. When using outage gauging tapes the tape is lowered into the tank until the plumb bob just penetrates the liquid. The tape is then rewound and the liquid level is read right off the plumb bob. The reading on the plumb bob is added to the tape reading giving the total outage (how much liquid has been removed from the tank).



## Outage Oil Gauging Plumb Bob

- 20oz., square shaped solid brass bob
- Eye milled from solid brass block (not removable)
- 7/8"/22mm square, 6"/152mm overall length
- Graduated in inches to 1/16ths, or metric top to bottom, zero falls inside top of hook eye



58712



150MM

Cat. No.	UPC No.	Description	Shelf Pack
58712	037103453181	20oz. solid brass outage plumb bob	12
150MM	037103105875	570g. brass outage plumb bob	12