

MB12S thru MB110S

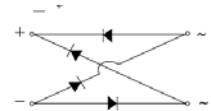
Surface Mount Schottky Bridge Rectifier
 Reverse Voltage 20 to 100V Forward Current 1A

Features

- Plastic package has Underwriters Laboratory Flammability Classification 94V-0
- High surge overload rating:30A peak
- Space saving
- High temperature soldering guaranteed:260°C/10 seconds



Package:TO-269AA (MBS)



Schematic Diagram

Mechanical Data

- Case: Molded plastic body over passivated junctions
- Terminals: plated leads solderable per MIL-STD-750 Method 2026
- Mounting Position: Any
- Weight: 0.078oz., 0.22g

Maximum Ratings & Electrical Characteristics

($T_A=25^\circ\text{C}$ unless otherwise noted)

Parameter	Symbol	MB12S	MB14S	MB16S	MB18S	MB110S	Unit	
Maximum Repetitive Peak Reverse Voltage	V_{RRM}	20	40	60	80	100	V	
Maximum RMS Voltage	V_{RMS}	14	28	42	56	70	V	
Maximum DC Blocking Voltage	V_{DC}	20	40	60	80	100	V	
Maximum Average Forward Output Current	$I_{F(AV)}$	1.0						A
Peak Forward Surge Current 8.3 MS Single Half Sine-Wave Superimposed on Rated Load (JEDEC Method)	I_{FSM}	30						A
Maximum Instantaneous Forward Voltage at 1.0A	V_F	0.50		0.70	0.85		V	
Maximum DC Reverse Current at Rated DC Blocking Voltage per Leg	I_R	0.5						mA
Typical Thermal Resistance per Leg (Note1)	$R_{\theta JA}$	88						°C/W
	$R_{\theta JL}$	28						
Operation Junction Temperature Range	T_j	-55 to +125						°C
Storage Temperature Range	T_{STG}	-55 to +150						°C

Notes: 1. Thermal resistance from junction to ambient and from junction to lead P.C.B. mounted on 0.2×0.2"(5.0×5.0mm) copper pad areas.

MB12S thru MB110S

Surface Mount Schottky Bridge Rectifier
 Reverse Voltage 20 to 100V Forward Current 1A

Ratings and Characteristics Curves

($T_A = 25^\circ\text{C}$ unless otherwise noted)

Fig.1 Forward Current Derating Curve

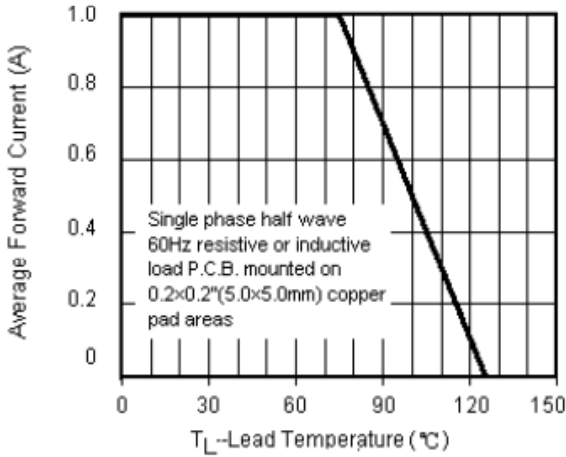


Fig.2 Maximum Non-Repetitive Peak Forward Surge Current

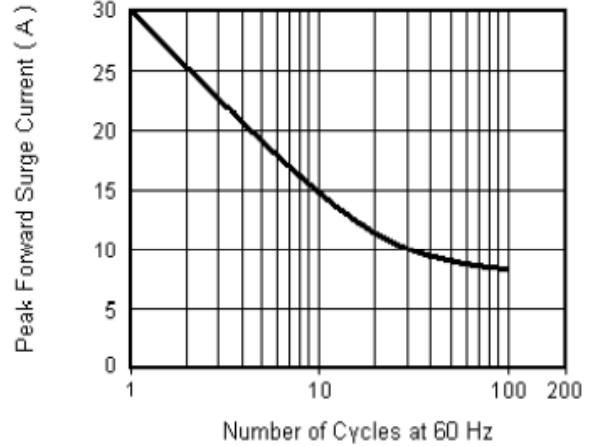


Fig.3 Typical Instantaneous Forward Characteristics

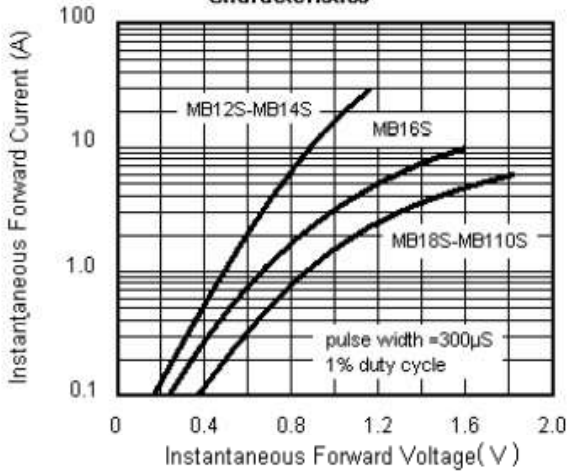
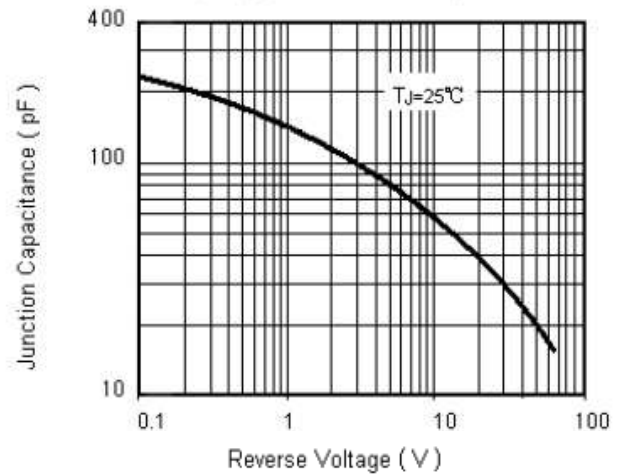


Fig.4 Typical Junction Capacitance

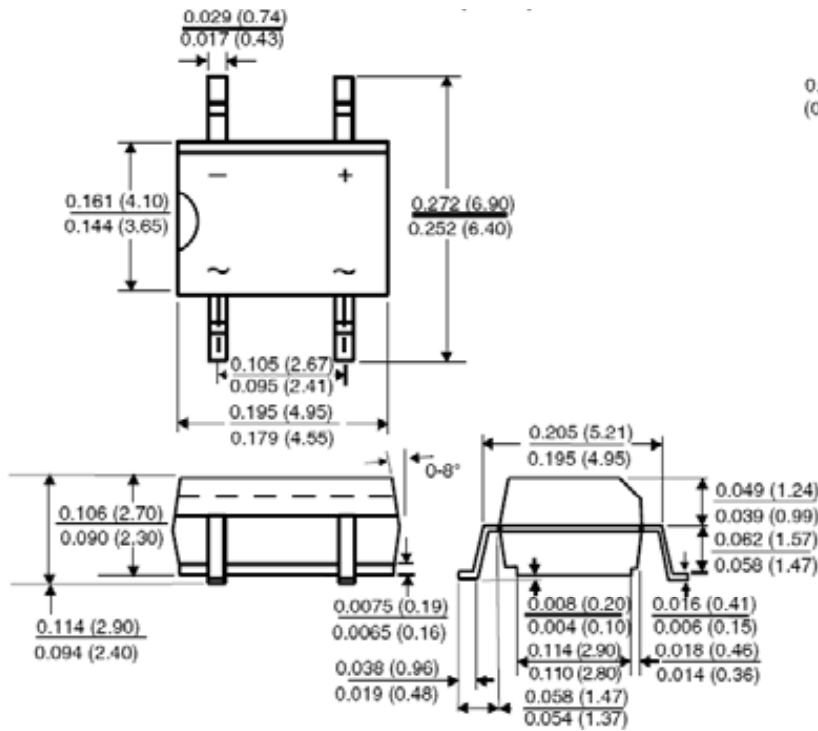


MB12S thru MB110S

Surface Mount Schottky Bridge Rectifier
 Reverse Voltage 20 to 100V Forward Current 1A

Package Outline Dimensions

TO-269AA (MBS)



Dimensions in inches and (millimeters)

Mounting Pad Layout

