

**SURFACE MOUNT
PCB TERMINAL BLOCKS**

- ✓ **Compact and low-profile**
- ✓ **Vibration-proof poke-in quick-release format**
- ✓ **Tape-and-reel for automated assembly**

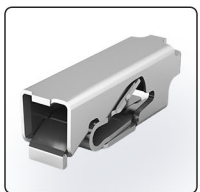
**WIDEST
RANGE OF
INDUSTRIAL
APPLICATIONS**

Used extensively in LED modules, WAGO's Surface Mount PCB terminal blocks are also the most versatile terminal blocks across all industries and applications. The low-profile, miniscule footprint virtually eliminates shadowing in luminaires, yet they are equally practical in saving valuable PCB space in a vast number of designs used in IoT, building automation, and various drive and controller applications. WAGO's spring pressure connection technology ensures a no-fail, vibration-proof solution ideal in harsh environments, and the tape-and-reel packaging enables automated pick-and-place assembly, keeping costs low.

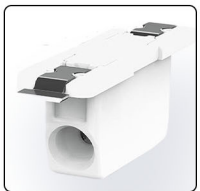
As the Canadian electronic stocking franchised distributor for WAGO, we will help you find the right series for your application. We offer competitive pricing and full support from design to production. Contact us today!

**2059 the smallest solution**

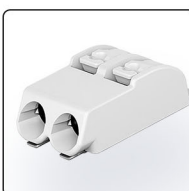
- 2.7mm profile, 3mm pitch
- 1–3 poles, 320/600V, 3A
- 26–20 AWG solid or tin bonded
- Side-by-side assembly without pole loss
- Easy push-in termination
- Removal with operating tool

**2065 the housing-less solution**

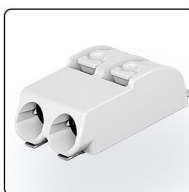
- No housing option offering maximum conductor size in a miniscule footprint
- 2.7mm profile, 24–18 AWG
- Solid, tin bonded or stranded options
- Push-in termination
- Removal with operating tool

**2070 the reverse solution**

- Reverse-side wiring enables a sleek 1.1mm profile on module front
- 1–3 poles, 6.5mm pitch, 600V, 9A
- 24–18 AWG solid or stranded
- Push-in termination of solid conductors
- Operating tool for stranded conductors
- Housing designed for easy pick-and-place

**2060 the broadest range solution**

- 4.5mm profile, 4mm pitch, 1–3 poles
- 320/600V, 9A, 24–18 AWG solid or stranded
- Push-in termination of solid conductors
- Push-buttons for insertion/removal of stranded and solid conductors
- Side-by-side assembly without pole loss

**2061 the high power solution**

- UL1059 for automated wiring systems
- 5.6mm profile, 6mm pitch, 1–3 poles
- 300/600V, 10A, 20–16 AWG solid or stranded
- Push-in termination of solid conductors
- Push-buttons for insertion/removal of stranded and solid conductors
- Side-by-side assembly without pole loss

**2075 the vertical solution**

- A no-housing, cost-effective solution for wiring on module reverse
- 600V, 9A, 20–18 AWG solid
- Push-in termination, turn and pull removal – no operating tool required

USED IN:

✓ **Lighting Modules** ✓ **IoT** ✓ **Building Automation** ✓ **Drive & Control Applications**

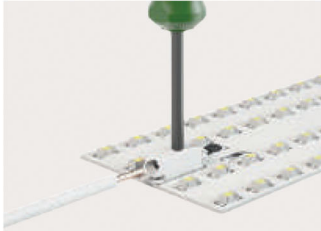
For more information on WAGO, visit diverseelectronics.com/Wago or call us today!



SURFACE MOUNT PCB TERMINAL BLOCKS

APPLICATION ILLUSTRATIONS & RELATED PRODUCTS

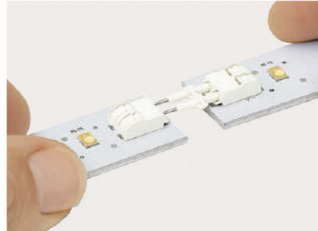
2059 the smallest solution



Push-in solid conductors, operating tool for removal and stranded

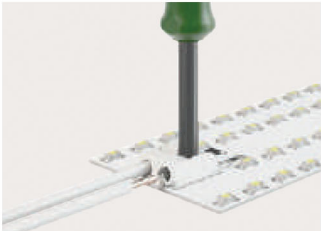


2059 Series compatible operating tool (206-859)



Board-to-board links are available to connect adjoining PCBs (2059-90*)

2060 the broadest range solution AND 2061 the high-power solution



Push-in solid conductors, operating tool (206-860, 2060 Series; 206-861, 2061 Series) for removal & stranded

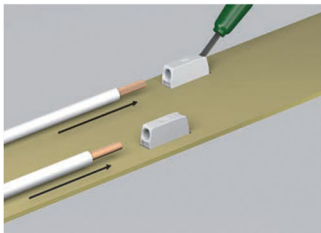


Now available in 8mm pitch, 2-pole version, 600V, 9A (2060-852/*)

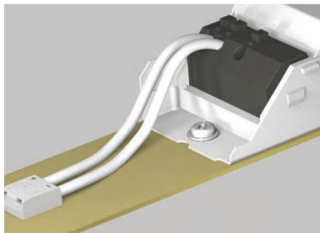


Board-to-board links are available to connect adjoining PCBs (2060-95*, 2060 Series; 2061-90*, 2061 Series)

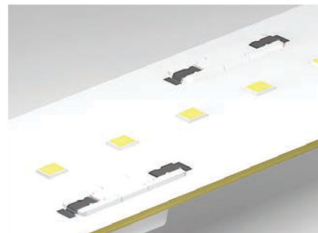
2070 the reverse solution



Insertion/removal with operating tool (2070-400) or pull solid conductors

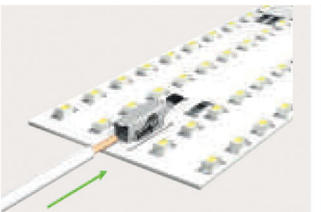


2070 Series enables reverse-side wiring of module

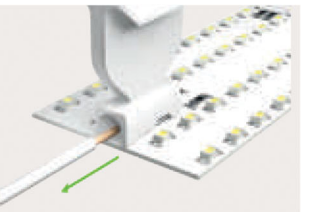


Sleek 1.1mm profile on LED module front virtually eliminates shadowing

2065 the housing-less solution

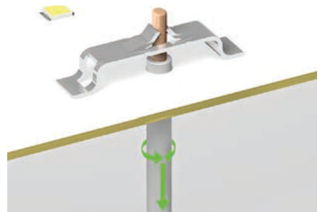


Push-in solid conductors, operating tool for removal and stranded



2065 Series compatible operating tool (2065-189)

2075 the vertical solution



Simplified reverse wiring; economical and no operating tool required

All SMT PCB terminal blocks are available in tape & reel format for seamless integration into the SMT soldering process



Request your free samples today!