



SPECIFICATIONS

ELECTRICAL LIFE : 500,000 cycles min, for ELTS□W-69, 67, 65, 64 100,000 cycles min. for ELTS□W-66, 68

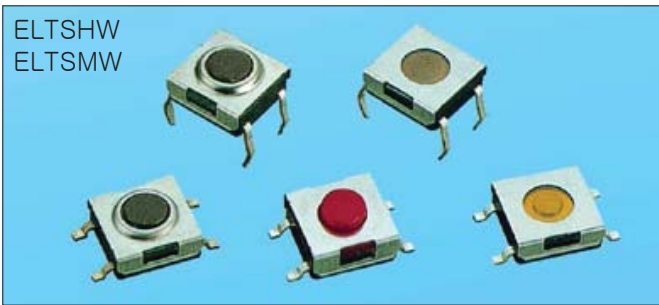
CONTACT RESISTANCE: 100mΩ max
INSULATION RESISTANCE:100MΩ min. 500VDC
DIELECTRIC STRENGTH: 250VAC/1 min
OPERATION FORCE: 360±90gf, Transparent(T), ELTS□W-65,67,69 260±70gf, Red(R), ELTS□W-64, 65, 67, 69 180±50gf, Brown(N), ELTS□W-64, 65, 67, 69 160±50gf, Brown(N), ELTS□W-66 160±50gf, Silver(S), ELTS□W-68
STORAGE TEMPERATURE: -30°C to +80°C
CONTACT ARRANGEMENT: 1 pole 1 throw

MATERIALS

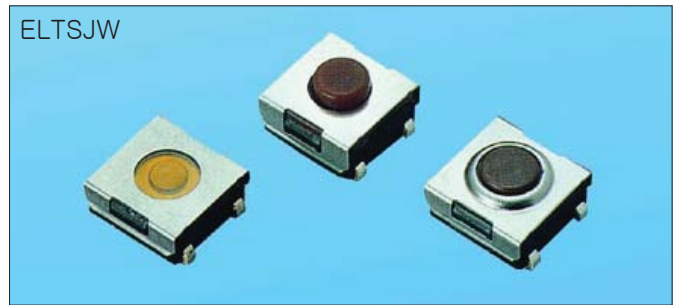
COVER - Stainless steel.
BASE - UL94V-0 Nylon High-Temp. Thermoplastic(Black)
CONTACT DISC - Phosphor bronze with silver cladding
TERMINAL - Brass with silver cladding

Table with 4 columns: ITEM NO., ELTSMW-66N, ELTSMW-68S, ELTS(H)MW-69,67,65,64N (R) 69, 67T. Rows include STEM, ADHESIVE TAPE, METAL STEM, and SEALED RUBBER.

ELTSHW ELTSMW

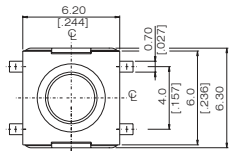


ELTSJW

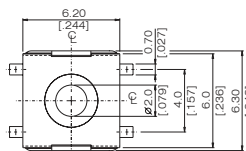


DIMENSIONS

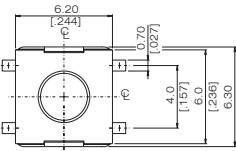
ELTSHW-66



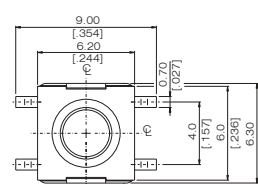
ELTSHW-68



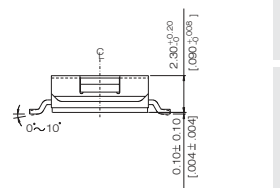
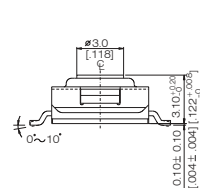
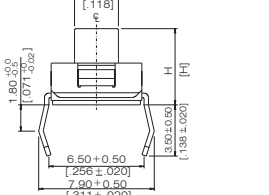
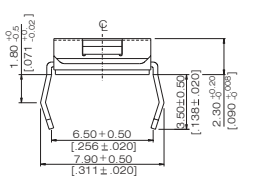
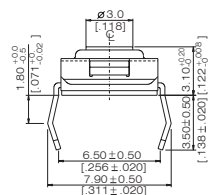
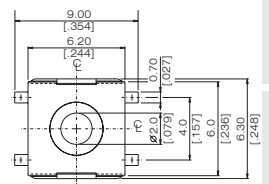
ELTSHW-69,67,65,64



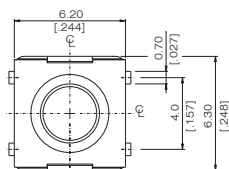
ELTSMW-66



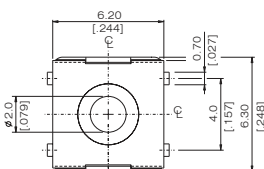
ELTSMW-68



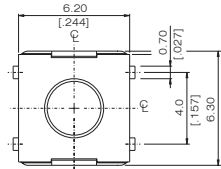
ELTSJW-66



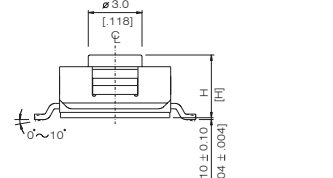
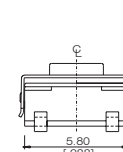
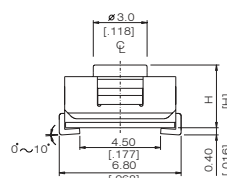
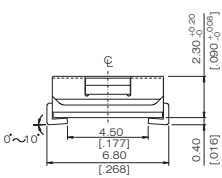
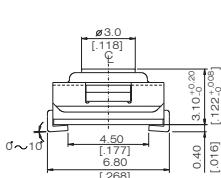
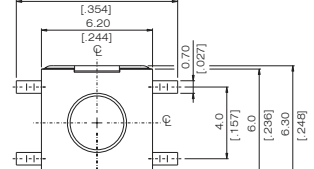
ELTSJW-68



ELTSJW-69,67,65,64



ELTSMW-69,67,65,64



## HOW TO ORDER

ELTS □ W - □ □ □ - □ □

RoHS code  
H = RoHS Compliant

Package Style:

□ = Bulk

B = Tube

T/R = Tape & Reel

Color of Stem For Operating Force:

▲ N= Brown, 160gf(66N), 180gf(69N, 67N, 65N, 64N)

S= Salmon, 160gf

R= Red, 260gf

T= Transparent, 360gf (69T, 67T, 65T)

Dimension H:

64= 4.5mm (N, R)

65= 3.5mm (N, R, T)

66= 3.1mm (N)

67= 5.2mm (N, R, T)

68= 2.3mm (S)

69= 3.8mm (N, R, T)

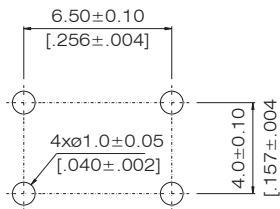
H= Through Hole Terminals

M= Surface Mounting Terminals

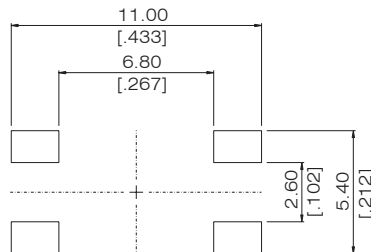
J = J Type Surface Mounting

## P.C.B. LAYOUT

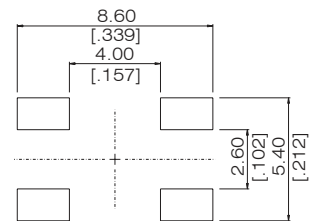
ELTSHW-6



ELTSMW-6



ELTSJW-6



## CIRCUIT

